

University of Mississippi

eGrove

Electronic Theses and Dissertations

Graduate School

1-1-2016

Critical Quality Attributes of Topical Semi-solid Dosage Forms: Solvent Activity

Muralikrishnan Angamuthu
University of Mississippi

Follow this and additional works at: <https://egrove.olemiss.edu/etd>



Part of the [Pharmacy and Pharmaceutical Sciences Commons](#)

Recommended Citation

Angamuthu, Muralikrishnan, "Critical Quality Attributes of Topical Semi-solid Dosage Forms: Solvent Activity" (2016). *Electronic Theses and Dissertations*. 1470.
<https://egrove.olemiss.edu/etd/1470>

This Dissertation is brought to you for free and open access by the Graduate School at eGrove. It has been accepted for inclusion in Electronic Theses and Dissertations by an authorized administrator of eGrove. For more information, please contact egrove@olemiss.edu.

CRITICAL QUALITY ATTRIBUTES OF TOPICAL SEMI-SOLID DOSAGE FORMS:

SOLVENT ACTIVITY

DISSERTATION

A Dissertation
presented in partial fulfillment of requirements
for the degree of Doctor of Philosophy
in Pharmaceutical Sciences with an emphasis in
Pharmaceutics & Drug Delivery
The University of Mississippi

by

MURALIKRISHNAN ANGAMUTHU

December 2016

Copyright © Muralikrishnan Angamuthu 2016
ALL RIGHTS RESERVED

ABSTRACT

Critical quality attribute has been defined as “a physical, chemical, biological or microbiological property or characteristic that should be within an appropriate limit, range, or distribution to ensure the desired product quality”. Deviations from preset quality metrics may potentially result in drug products with inferior therapeutic efficacy and unacceptable clinical safety profile. Topical cream formulations may possess numerous quality attributes that can affect the permeation of the drug through skin and consequently therapeutic efficacy. CQAs of topical formulations are often aimed at characterizing either the physicochemical properties of APIs or bulk characteristics of the formulation itself. Solvent systems constitute a major proportion of semisolid cream type formulations and its inclusion is critical to overall product performance (drug delivery to skin). A majority of the commercially available dermatological formulations contain solvent systems (water, ethanol, propylene glycol, glycerol and liquid chemical permeation enhancers) but the significance of solvent activity (thermodynamic solvent properties) on product performance has not been investigated so far, to be translated into a quality metric system (CQA). Water was utilized as a model solvent in order to link thermodynamic solvent activity and drug delivery performance of topical semi-solid cream systems. The overall aim of the research investigation is to evaluate water activity as a critical quality attribute of topical semi-solid dosage forms. Primary goal of this study was to investigate the mechanistic effects of water activity on drug release properties of formulation and drug permeation across the skin. A related objective was to investigate the mechanistic effects of

water activity on skin hydration and barrier properties. For mechanistic investigation, a simple topical vehicle of varied a_w (0.97 - 0.42) was formulated using deionized water with caffeine (model drug). Drug transport studies were performed using Franz diffusion cells across cellulose and silicone membrane (porous-hydrophilic and non-porous-hydrophobic membrane models, respectively) in order to elucidate the effects of water activity on drug release from formulation vehicles. Caffeine flux was found to decrease with decreasing water activity of the vehicle. The same trend was observed for drug release studies across all synthetic membranes tested. Series of dye diffusion study was designed to investigate bulk diffusion/release properties of caffeine (model solute) from water activity modulated topical formulations. Sucrose solution was utilized as viscosity control to decouple/delineate water activity effects on bulk solute diffusion. Caffeine diffusion was relatively slow in low water activity formulation vehicles versus to respective viscosity controls of same water activity (sucrose solution). *In-vitro* permeation studies were performed across porcine epidermis to investigate water activity effects on drug permeation across model skin membrane. Utilizing drugs of varied skin affinity (caffeine, acyclovir and nicotine) IVPT was performed across porcine epidermis under finite and infinite dosing conditions. Under both dosing conditions, caffeine, acyclovir and nicotine flux were found to reduce with lowering water activity of formulation vehicle. Also, the lag time for drug permeation increased with a decrease in water activity of solution formulation. Effects of low water activity on skin hydration were studied by placing vehicles of varied water activity on porcine skin equilibrated to ambient conditions (22°C/50% RH) and monitoring the changes gravimetrically. The hydration level measurement following exposure to different water activity formulations showed that the moisture content increases in the epidermis when hydrated with

water, as expected. Notably, when exposed to lower water activity solutions, the epidermis would lose existing water, exhibiting an apparent dehydration effect. The histological evaluation revealed mild perturbation in the stratum corneum layer of the skin samples treated with lower water activity vehicles. This was potentially caused by osmotic shrinkage of corneocytes, which would be in agreement with the data from the hydration experiment. Role of hydrating agents (propylene glycol) on preservation of skin hydration, barrier properties and drug permeation was also investigated. Increasing levels of propylene glycol in low water activity vehicle (aw-0.78) enhanced drug flux across porcine epidermis. Notably, porcine skin treated with propylene glycol-aw 0.78 vehicle mixture (1:1) reverted stratum corneum perturbation caused by low water activity vehicle. Manufacturing process studies were undertaken to investigate effects of manufacturing process on water activity of topical cream (w/o type). Process parameters had profound impact on modulating water activity of a Q1/Q2 similar w/o type cream. Dynamic drying measurement revealed same water content in process prototypes. Based upon the results, water activity appears to be a potentially critical quality attribute for topical semisolid dosage forms, and may have the potential to influence the drug release from formulation as well as the permeation of the drug across the skin.

DEDICATION

This Dissertation is Dedicated to my Wife Swetha Ainampudi

ACKNOWLEDGEMENT

I would like to express my deep and sincere gratitude to my advisor, Dr. S. Narasimha Murthy for his support, patience and encouragement throughout my research work. His motivation and support helped me a lot to learn many aspects required to achieve high standards in research.

I would like to have this opportunity to express my sincere thanks to Dr. Michael A Repka, Dr. Seongbong Jo, and Dr. John O’Haver for accepting my request and providing their valuable time and suggestion during my prospectus and dissertation. I am thankful to my lab members Abhishek Juluri, Prashanth Manda, Vijaykumar Hadeek, Avadhesh Kushwaha, Purnendu Kumar Sharma, who helped and supported me a lot during my graduation. I want to thank all graduate students in Department of Pharmaceutics and Drug Delivery for their support in various projects.

I would like to acknowledge the help of Dr. H. N. Shivakumar (Institute for Drug Delivery and Biomedical Research, Bangalore, India), Dr. Vijayasankar Raman (National Center for Natural Products Research, University of Mississippi) and Dr. Santanu Kundu (Department of Chemical Engineering, Mississippi State University) for their support to conduct my projects successfully.

I would like to thank my father (Angamuthu Krishnaswamy) and mother (Ranganayaki Angamuthu) for their love and support. Heartfelt thanks to my family members and friends for their constant love, motivation and support.

TABLE OF CONTENTS

ABSTRACT.....	ii
DEDICATION.....	v
ACKNOWLEDGEMENTS.....	vi
TABLE OF CONTENTS.....	vii
LIST OF TABLES.....	xi
LIST OF FIGURES.....	xii
CHAPTER 1.....	1
INTRODUCTION.....	1
Quality by Design (QbD) in Topical Semi-solid Cream Products.....	4
Problem Statement.....	9
Water Activity.....	10
Research Objectives.....	11
CHAPTER 2.....	13
MECHANISTIC INVESTIGATION OF WATER ACTIVITY EFFECTS AT DRUG-VEHICLE INTERFACE AND INFLUENCE ON DRUG RELEASE.....	13
1. Objective.....	13
2. Materials.....	13
3. Methods.....	14
3.1. Formulation of topical vehicle with modulated water activity (a_w).....	14

3.2. Determination of viscosity of topical drug solution	14
3.3. Qualitative dye diffusion test.....	15
3.4. Analytical methods	15
3.5. Statistical analysis.....	16
4. Results and Discussion.....	16
4.1. Effect of water activity on <i>in vitro</i> drug release from formulation vehicles.....	16
4.2. Mathematical Modeling.....	20
4.3. Qualitative Dye Diffusion Study.....	21
5. Conclusion.....	24
CHAPTER 3.....	25
MECHANISTIC INVESTIGATION OF WATER ACTIVITY EFFECTS AT FORMULATION VEHICLE-SKIN INTERFACE AND INFLUENCE ON SKIN DRUG DELIVERY.....	25
1. Objective.....	25
2. Materials	25
3. Methods.....	26
3.1. <i>In vitro</i> drug permeation studies across porcine epidermis.....	26
3.2. Effect of varying levels of propylene glycol (humectant) on skin permeation of model drug from low water activity vehicle.....	27
3.3. Determination of effect of water activity of vehicle on dermal penetration of topically applied drugs.....	27
3.4. Determination of skin hydrodynamics.....	28

3.5. Histology.....	29
3.6. Analytical methods.....	29
3.7. Statistical treatment.....	30
4. Results and Discussion.....	30
4.1. Effect of water activity of the vehicle on <i>in vitro</i> drug permeation across the porcine epidermis.....	30
4.2. Effect of water activity of the vehicle on skin hydrodynamics.....	35
4.3. Effect of water activity of the vehicle on dermal penetration of drugs.....	37
4.4. Histological Evaluation.....	39
4.5. Investigation of propylene glycol (humectants) in enhancing skin permeability of drugs from low water activity formulation vehicles	41
5. Conclusion.....	44
6. CHAPTER 4.....	46
INVESTIGATION OF MANUFACTURING PROCESS PARAMETERS ON WATER ACTIVITY OF TOPICAL SEMI-SOLID CREAM (WATER-IN-OIL TYPE).....	46
1. Objective.....	46
2. Materials.....	46
3. Methods.....	47
3.1. Preparation of water-in-oil type test cream formulations.....	47
3.2. Determination of water activity of test creams.....	48
3.3. Determination of total water content in test creams using thermogravimetry.....	48
3.4. Determination of drying rate of test creams using thermogravimetry	48

3.5. Determination of globule size distribution in test creams	49
3.6. Statistical Analysis.....	49
4. Results and Discussion.....	49
4.1. Effect of manufacturing process parameters on water activity of test cream formulations.....	49
Conclusions.....	55
BIBLIOGRAPHY.....	56
VITA.....	62

LIST OF TABLES

Table 1: Typical Formulation Components of Topical Drug Products.....	3
Table 2: Comprehensive list of potential critical quality attributes of a topical semi-solid cream product.....	6
Table 3: Mathematical Modeling.....	20
Table 4: Effect of propylene glycol levels on water activity of test formulation vehicle (a_w -0.78)	43
Table 5: Composition of model w/o type cream formulation used for manufacturing process investigation	47
Table 6: Effect of process parameters on water activity of w/o type cream formulation processed at various conditions.....	51

LIST OF FIGURES

Figure 1: Effect of water activity of the vehicle on caffeine diffusion across Cuprophan membrane.....	16
Figure 2: Effect of water activity of the vehicle on caffeine permeation flux across silicone membrane.....	18
Figure 3a: Time lapse observation of effect of water activity on solute (methylene blue) diffusivity in deionized water (a_w -0.98)	23
Figure 3b: <i>Left</i> : Time lapse observation of effect of water activity on solute (methylene blue) diffusivity in formulation vehicle (a_w -0.78; viscosity – 1.9cP). <i>Right</i> : Time lapse observation of solute diffusion in viscosity control for the a_w -0.78 formulation vehicle (20% w/v sucrose solution in deionized water, viscosity – 1.9 cP)	23
Figure 3c: <i>Left</i> : Time lapse observation of effect of water activity on solute (methylene blue) diffusivity in formulation vehicle (a_w -0.42; viscosity – 3.6 cP). <i>Right</i> : Time lapse observation of solute diffusion in viscosity control for the a_w -0.78 formulation vehicle (31% w/v sucrose solution in deionized water, viscosity – 3.6 cP)	23
Figure 4: Effect of water activity of the vehicle on caffeine permeation flux across porcine epidermis under infinite dosing conditions.....	30

Figure 5: Effect of water activity of the vehicle on caffeine permeation flux across porcine epidermis under finite dosing conditions.....	31
Figure 6: Effect of vehicle water activity on acyclovir permeation [$\log P (-) 1.56$] across porcine epidermis under infinite dosing conditions.....	33
Figure 7: Effect of vehicle water activity on nicotine permeation [$\log P 1.17$] across porcine epidermis under infinite dosing conditions.....	34
Figure 8: Percent water content in porcine epidermis after treatment with water activity vehicle.....	35
Figure 9: Effect of water activity of the vehicle on caffeine accumulation in porcine epidermis after pretreatment for 8 hours	37
Figure 10a: Representative SEM picture of human cadaver skin treated with control vehicle ($a_w 0.98$).....	39
Figure 10b: Representative SEM picture of human cadaver skin treated with test formulation vehicle ($a_w 0.78$).....	39
Figure 11: Effect of propylene glycol on permeation behavior of sodium fluorescein from various water activity vehicles.....	41
Figure 12: Representative SEM picture of human cadaver skin treated with propylene glycol and a_w -0.78 vehicle (1:1).....	44
Figure 13: Determination of total water content in model w/o type cream formulation using thermogravimetry	52
Figure 14: Determination of drying rate of model w/o type cream formulation using thermogravimetry.....	52

Figure 15a: Globule size distribution of dispersed phase (aqueous phase) in test cream I (a_w -0.93).	53
Figure 15b: Globule size distribution of dispersed phase (aqueous phase) in test cream II (a_w -0.87).....	54

CHAPTER 1

INTRODUCTION

Topical semi-solid dosage forms are traditionally constituted in the form of creams (oil-in-water & water-in-oil type based), gels (aqueous & hydro-alcohol based), ointments (hydrocarbon & polyethylene glycol based) or pastes^{1,2}. Most important advantage of topical formulations is the allowance for localized treatment of number of several dermatological conditions with minimal systemic exposure. Other relevant advantages include possible application of therapeutically relevant higher drug (at the site of action), reduced risk of systemic side effects and better patient compliance.

Choice of topical semi-solid formulation vehicle depends upon several factors but predominantly the type of disease, pathological condition of skin type to be treated and biopharmaceutical considerations³⁻⁵. Generally, lipophilic or hydrocarbon based vehicles are employed to treat conditions associated with dry skin. Ointment formulations are very effective as they provide moisturizing effect on dry/flaky skin owing to occlusive properties which leads to potential hydration of skin and may enhance percutaneous drug absorption. Ointments may possess less irritation potential but may have a greasy feel and patients dislike. On contrary, emulsion based cream formulations (contain both oil and water) are preferred for their cosmetic appeal and may be less viscous and greasy. Depending on the physicochemical properties of drug, it is feasible to formulate both hydrophilic and lipophilic drugs (based on the dispersion medium: oil or water) to achieve certain degree of solubilization in the dermatological vehicle.

Topical semi-solid dosage forms may be either simple or complex in nature and may contain few or several excipients formulated as a thermodynamically stable/unstable multi-component system⁶. The components of a topical semi-solid drug product will depend on the choice of formulation type and could range from simple solution (containing drug and solvent) to inherently complex polymeric gels and thermodynamically unstable emulsion based cream systems⁷. A simple topical solution may constitute active pharmaceutical ingredient dissolved in suitable solvent together with additives like pH modifiers, co-solvents and preservatives. A topical gel formulation may contain viscosity modifiers like cellulose (natural polymer) or acrylic (semi-synthetic) polymers in aqueous or hydro-alcohol systems with preferable rheological properties for consistent delivery of active ingredients. An ointment may contain active ingredients dissolved or dispersed in monolithic hydrocarbon or water washable PEG based vehicles. A cream formulation is inherently complex and are predominantly emulsion based systems containing two immiscible liquids dispersed (micron scale), one within the other, leading to the formation of thermodynamically unstable system (but kinetically stabilized to achieve suitable shelf life) with predetermined physical and chemical stability. The stability of emulsion can be potentially improved by inclusion of viscosity enhancing agents acting at liquid interface. Additional excipients like pH modifiers, humectants, penetration enhancers, drug co-solvents and preservatives may be employed to arrive at a therapeutically viable dermatological base/vehicle for drug delivery.

S. No.	Functional Component	Description	Example
1.	Ointment Base	Bulking material for semi-solid product	Lanolin, Lanolin alcohols, Paraffin, Petrolatum, White wax, Stearic acid, Stearyl alcohol
2.	Emulsifying Agent	Surface acting agents to reduce interfacial tension and improve contact/wetting between hydrophilic and hydrophobic medium	Polysorbate, Poloxamer, Cetostearyl alcohol, Sodium lauryl sulfate
3.	Humectant	Improves retention of water in the formulation	Glycerin, Propylene glycol, Polyethylene glycol, Sorbitol
4.	Thickening Agent	Increases viscosity of the formulation Bulking material for formulation	Carbomer (acrylic polymers), Cellulose polymers, Polyethylene oxide, Sodium alginate, Gelatin
5.	Preservative	Improves microbial stability of the product	Parabens, Benzoic acid, Benzalkonium chloride, Phenoxyethanol
6.	Permeation Enhancer	Improves percutaneous permeation of active ingredients	Propylene glycol, Oleic acid, Polyethylene glycol
7.	Antioxidant	Prevent oxidative degradation	Butylated hydroxytoluene, Butylated hydroxyanisole
8.	Acidifying/Alkalizing Agent	Maintain appropriate pH of the formulation	Citric acid, Phosphoric acid, Trolamine, Sodium hydroxide
9.	Vehicle/solvent	Medium for the formulation	Purified water, mineral oil, Propylene glycol

Table 1: Typical Formulation Components of Topical Drug Products

Quality by Design (QbD) in Topical Semi-solid Cream Products

Pharmaceutical product quality is instrumental in ensuring patient safety and thus it has been realized of late that the quality should be built in the product rather than being finally tested. In order to encourage continuous improvement in the pharmaceutical quality control, US FDA recently outlined a QbD framework for product development in the '*Pharmaceutical Current Good Manufacturing Practices (cGMPs) for the 21st Century*' initiative to achieve a desired state in quality pharmaceutical manufacturing⁸. In conjunction, the International Conference on Harmonization (ICH) developed guidelines to globally harmonize technical requirements for the manufacture and use of pharmaceutical ingredients and drug products. The ICH guidelines have helped to transform the conventional univariate-, trial-and-error based product development approach to a multivariate-, science- and risk-based practice governed by the principles of Quality by Design (QbD).

The concepts of QbD are well described in several regulatory guidelines including '*PAT (Process Analytical Technology) – A Framework for Innovative Pharmaceutical Manufacturing and Quality Assurance*', ICH Q8 (R2) entitled '*Pharmaceutical Development*', ICH Q9 entitled '*Quality Risk Management*' and ICH Q10 entitled '*Pharmaceutical Quality System*'^{9,10}. The ICH Q8 guidelines are applicable to Product design, Process design and Scale-up and Transfer while ICH Q10 guidelines are relevant from process design through to commercial manufacturing. On the other hand, the ICH Q 9 guidelines are known to regulate all the stages of the product life cycle. QbD begins with outlining the quality target product profile (QTPP) as well as critical quality attributes (CQAs) for the target drug product.

QTPP can be defined as “prospective summary of the quality characteristics of a drug product that ideally needs be achieved to ensure the desired quality, taking into account safety and efficacy of the drug product”.

Critical quality attribute has been defined as “a physical, chemical, biological or microbiological properties or characteristics that should be within an appropriate limit, range, or distribution to ensure the desired product quality”. Deviations from preset quality metrics may potentially result in drug products with inferior therapeutic efficacy and unacceptable clinical safety profile¹¹.

Topical cream products may possess numerous quality attributes that can affect the permeation of the drug through skin, skin retention of cream and patient acceptability which can further potentially impact therapeutic efficacy and safety¹⁴. Few of the critical quality attributes are direct result of microstructural arrangement (Q3 characteristics) of the semi-solid cream products. Microstructural (Q3) properties of cream products are significantly affected by manufacturing process to an extent that even cream lots of Q1/Q2 (qualitative and quantitative) similarity result in varying degree of microstructural (Q3) arrangement when processed at different conditions. Table 2 contains a comprehensive list of critical quality attributes (inclusive of microstructural properties) for a semi-solid cream product.

**List of Critical Quality Attributes of
Topical Semi-solid Creams**

Organoleptic properties
Drug identification
Drug Assay
Content uniformity/homogeneity
pH
Particle size distribution
Polymorphism
Globule size distribution
Rheology
Water content

Table 2: Comprehensive list of potential critical quality attributes of a topical semi-solid cream product

1. Organoleptic properties:

A qualitative description of organoleptic properties of the proposed drug product is provided as a test specification which include, color, smell, texture etc. For example, if color of the product is critical for patient acceptability and is susceptible to change upon storage, adequate quantitative tests should be developed to set the acceptable criteria for the color change.

2. Drug identification and assay:

Drug assay affects clinical efficacy of the drug product and the acceptable limits are between 90-110%.

3. Content uniformity and homogeneity:

Visual investigation of the drug product may be a useful tool to detect phase separation, syneresis (extrusion of water from gel) and no foreign matter and product homogeneity. Also, drug content uniformity and homogeneity may critically affect the clinical efficacy of the drug product and should be assessed using validated analytical techniques.

4. pH of the formulation:

pH is a potential critical quality attribute of topical cream formulations. pH may affect drug stability and physicochemical properties of semi-solid products like emulsion stability and rheological properties. Also, pH affects the product performance by the way of influencing;

With respect to product performance and therapeutic outcome, solubilized drug content in aqueous compartment is the most relevant parameter for emulsion based cream formulations⁷. Drugs with pH dependant solubility are greatly affected by pH changes within the formulation. Also, it is a well known fact that unionized drug species traverse the stratum corneum barrier more effectively compared to the ionized drug species¹². The ionic equilibrium (ionized-unionized fraction) of solubilized drug species can also be potentially affected by pH conditions built within the formulation.

Skin membrane acts as a pH dependant perm-selective barrier to permeation of drug molecules. It was reported that drug permeability through skin barrier membrane is a function of pH of formulation vehicle applied¹³. Inclusion of pH modifiers in formulation has the potential to alter baseline pH conditions of the skin membrane therefore eventually altering its permeability status. On the other hand, it was reported that the skin membrane was shown to resist acid/alkaline regression owing to its buffer capacity and transiently regain its baseline pH¹⁴. Hence, pH appears to be one of the critical quality attribute of topical cream formulation and

needs to be controlled after thorough review of the physicochemical properties of drug and its permeability characteristics through skin membrane.

5. Particle size distribution and drug polymorphism:

If the topical product contains suspended drug particles, then particle size distribution and crystal habit of the drug may potentially become critical to intended performance of the formulation. Particle size distribution and polymorphic nature may affect drug dissolution rate in aqueous component of cream formulation thereby influencing the clinical performance¹⁵.

6. Drug concentration in aqueous phase:

Drug solubilization in formulation vehicle is one of the prerequisites for percutaneous absorption of drugs¹⁵. Hence, the amount of drug dissolved in the aqueous component of the drug product becomes the most relevant parameter to gauge the clinical efficacy¹¹.

7. Globule size distribution:

In case of emulsion based cream formulations (o/w & w/o type), process parameters (homogenization temperature, speed and time) have high impact on globule size distribution of dispersed phase and may potentially affect both macro and microstructure level quality attributes like organoleptic, sensory, rheological characteristics and drug solubility in formulation vehicle.

8. Rheology:

Understanding the rheological properties of topical cream formulations is critical to drug delivery across skin, formulation stability and ease of application on skin. Rheological properties of semi-solid products are extensively influenced by microstructural (Q3) properties, which may be affected by manufacturing process parameters. Ease of spreading of formulation on skin is inversely related to its viscosity and may limit the total area of application thereby limiting the area available for percutaneous drug absorption. Also, viscosity inversely affects the rate of drug

release from the formulation vehicle, at microstructure level, thereby hindering the rate and extent of drug availability for percutaneous absorption.

9. Specific gravity:

Specific gravity of cream formulations is very sensitive to manufacturing process due to potential for air entrapment in the product. Air entrapment in the product may lead to variation in assay value of the product and most importantly the desired dose may not be delivered during 'in-use' conditions.

Problem statement

Aforementioned critical quality attributes are aimed at characterizing either the physicochemical properties of APIs or bulk characteristics of the formulation system itself. Solvent systems constitute a major proportion of semisolid cream type formulations and its inclusion is critical to overall product performance (drug delivery to skin). A majority of the commercially available dermatological formulations contain solvents like water, ethanol, propylene glycol, glycerol and liquid chemical permeation enhancers. However, the significance of solvent activity (physicochemical properties of solvent) over product performance has not been investigated so far to be translated into a quality metric system (CQA).

Critical quality attribute has been defined as "a physical, chemical, biological or microbiological property or characteristic that should be within an appropriate limit, range, or distribution to ensure the desired product quality". Deviations from preset quality metrics may potentially result in drug products with inferior therapeutic efficacy and unacceptable clinical safety profile. Topical semi-solid cream formulations may possess numerous quality attributes that can affect permeation of drug through skin, skin retention of cream and patient acceptability

which can further potentially impact therapeutic efficacy⁹. A comprehensive list of critical quality attributes for a topical cream product is given in table 2.

Aforementioned critical quality attributes are aimed at characterizing either the physicochemical properties of API or bulk characteristics of the formulation system itself. Solvent systems constitute a major proportion of semisolid cream type formulations and its inclusion is critical to overall product performance (drug delivery to skin). A majority of the commercially available dermatological formulations contain solvents like water, ethanol, propylene glycol, glycerol and liquid chemical permeation enhancers. However, the significance of solvent activity (physicochemical properties of solvent) on product performance has not been investigated by far in order to construct a quality metric system (CQA).

Water is the predominantly used solvent type in most cream and hydrogel type semisolid formulations (containing as high as 70% w/w and 95% w/w water content, respectively). Hence, water was utilized as a model solvent system in the present research work and we propose to evaluate water activity as a potential critical quality attribute of topical semi-solid cream formulations.

Water Activity

Water activity (a_w) is thermodynamic energy status of solvent water, which is mathematically represented as ratio of partial vapor pressure of water (p) to vapor pressure of pure water (p_o), at equilibrium temperature. Water activity does not essentially depend on absolute water content in a system, but is the measure of thermodynamic energy status. Solvent water has potential to interact with chemical species like salts, sugars, amino acids, glycols and polymers via surface interaction (dipole-dipole), ionic bonds, hydrogen bonds and Van der Waals

forces and as a consequence could alter its thermodynamic activity. Water activity can measurably range between 0.0 to 1.0 (pure water)¹⁶.

In pharmaceutical applications, water activity has been linked to stability (microbiological/physical/chemical), thermodynamic/kinetic activity (drug dissolution) and processability (powder flow and compaction) of several pharmaceutical systems. However, it is the goal of proposed research study to investigate the effects of water activity of topical semisolid formulations on its skin drug delivery attributes. To bridge the knowledge gap, it is the objective of the proposed research study to investigate the effects of solvent activity of topical semisolid formulations on its performance attributes.

Research Objectives

Main objective of the research study is to perform mechanistic investigation to outline the effects of water activity on individual factors controlling the topical drug delivery (variables governing formulation, skin and formulation-skin interface).

In the first objective, effects of water activity on formulation related variables (*physicochemical properties*) governing topical drug delivery was investigated in detail. Utilizing Franz diffusion cells, drug transport studies were performed across synthetic membranes (cellulosic and silastic) to evaluate the effects of water activity on *in-vitro* drug release from model topical vehicles of diverse water activity. In addition, physicochemical characterization, mathematical modeling and qualitative dye diffusion test were performed to mechanistically understand the effects of water activity on drug diffusion/release from water activity vehicles.

In the second objective, effect of water activity on skin related variables (***physiological properties***) governing topical drug delivery was investigated in details. Utilizing Franz diffusion cells, drug transport studies were performed to evaluate the effects of water activity on *in-vitro* drug delivery and drug permeation across model biological membrane (porcine skin). In addition, effects of water activity on topical drug delivery under finite/infinite dosing conditions, drugs of various physicochemical properties, skin hydrodynamics and barrier properties were also investigated. *In-vitro* permeation studies were undertaken to investigate the role of hydrating agents on topical drug delivery upon inclusion in low water activity vehicles. Histological investigation was undertaken to study the role of hydrating agents on barrier property restoration of porcine skin (model biological membrane).

In the third objective, model water-in-oil type creams were prepared under various process parameters (***manufacturing variables***) to study its' effects on resultant water activity of the formulation base.

CHAPTER 2

MECHANISTIC INVESTIGATION OF WATER ACTIVITY EFFECTS AT DRUG-FORMULATION VEHICLE INTERFACE AND INFLUENCE ON DRUG RELEASE

1. Objective

Topical drug delivery is a net result of complex interaction between the following: drug-vehicle interaction, vehicle-skin interaction and drug-skin interaction. In order to investigate the effects of water activity at drug-vehicle interface, as well as, to delineate other skin and drug related variables, simple aqueous based topical vehicles were prepared using caffeine as a model drug. Mechanistic investigation by the way of qualitative dye diffusion test and mathematical modeling is undertaken to characterize *in-vitro* drug release from various water activity vehicles.

2. Materials

Caffeine, methylene blue and lithium chloride were purchased from Sigma Aldrich (St. Louis, MO). Sucrose NF was purchased from Spectrum chemical manufacturing Co., (New Brunswick, NJ). Cuprophan membrane was purchased from Agilent technologies (Santa Clara, CA) and silicone membrane was obtained from SMI medical device manufacturer (Saginaw, MI). All solutions and dilutions were prepared using purified deionized water (resistivity ≥ 18.2 m Ω .cm, Barnstead Nanopure Diamond™, Barrington, IL).

3. Methods

3.1. Formulation of topical vehicle with modulated water activity (a_w)

To delineate other formulation effects, simple topical solution vehicle was prepared by mixing drug in deionized water to yield a homogenous solution. Water activity of topical solution vehicle was modified by adding predetermined quantity of lithium chloride to yield a wide range of water activity (0.98 - 0.42). Water activity was experimentally determined by dew point technique using AquaLab Series 3 (Decagon Devices Inc.). Drug content in topical vehicles is maintained as follows (within parentheses is the saturation solubility in water at 25° C): caffeine - 15mg/mL (21.6 mg/mL), nicotine – 50 mg/mL (1g/mL) and acyclovir – 1 mg/mL (1.6 mg/mL) (KRISTL et al., 1993, Yalkowsky et al., 2010, Budavari and Windholz, 1989).

3.2. Determination of viscosity of topical drug solution

Viscosity of all topical solution vehicles were determined using Ostwald viscometer. Density of the topical solution vehicles was experimentally determined at 22° C using calibrated pipette and weighing balance. Viscosity (0.8990 centipoises) and density (0.9982 g/mL) reference values for deionized water (standard reference) at 22° C, was used for the calculation. Briefly, time taken for the passage of reference and test solution between the upper and lower mark in the viscometer was determined and relative viscosity of the test solution was calculated using the formula shown below.

$$\frac{\eta}{\eta_{ref}} = \frac{t * \rho}{t_{ref} * \rho_{ref}}$$

where, η , ρ and t are viscosity, density and time taken for passage for the standard reference (water) and η_{ref} , t_{ref} and ρ_{ref} are viscosity, density and time taken for passage for the test solution. Stokes-Einstein equation was used to theoretically calculate drug diffusion coefficient as a function of vehicle viscosity,

$$D = \frac{\kappa T}{6\pi\eta r}$$

where, D is the diffusion coefficient, k is the Boltzmann constant, T is absolute temperature, η is the solution viscosity and r is the hydrodynamic radius of solute/drug.

3.3. Qualitative dye diffusion test

Dye diffusion test was performed in control (deionized water, a_w -0.98) and test vehicles (modulated water activity between a_w -0.78 and a_w -0.42) using methylene blue as a model solute (mol. wt. 319.85 g/mol). Control and test vehicles (3 mL) were taken in scintillation glass vials and 50 μ L of 0.05% w/v methylene blue solution (prepared in deionized water) was carefully added along the side of the vial using a pipette. As a result, methylene blue solution forms a distinct layer or ring on top of the bulk medium (control and test vehicles). Followed by, time lapse observation was performed and extent of bulk dye diffusivity was pictorially recorded using a digital camera.

3.4. Analytical methods

All chemical analysis and drug quantification in transport studies were performed using HPLC analytical method. The analytical conditions utilized for all model drugs are as follows. Reversed phase chromatography was performed for quantification of model drug caffeine. HPLC system consists of Waters[®] 1525 binary pump (Waters[®] Corporation, Milford, MA) equipped with Waters[®] 717 plus autosampler equipped with UV absorbance detector. Chromatographic separation was achieved under isocratic mode at a flow rate 1 mL/min on Symmetry[®] C18 (4.6 x 150 mm; 5 μ) reversed phase analytical column. Caffeine was eluted using mobile phase consisting of 50% v/v methanol and 50% v/v water system (50:50 v/v) at analytical wavelength 254 nm. The chromatogram was analyzed using Breeze[®] software system.

3.5. Statistical treatment

GraphPad InStat 3 software was used for statistical analysis. One-way ANOVA was used to determine the level of significance for correlation between parameters and $P < 0.05$ was considered as the acceptable level of significance.

4. Results and Discussion

4.1. Effect of water activity on *in vitro* drug release from formulation vehicles

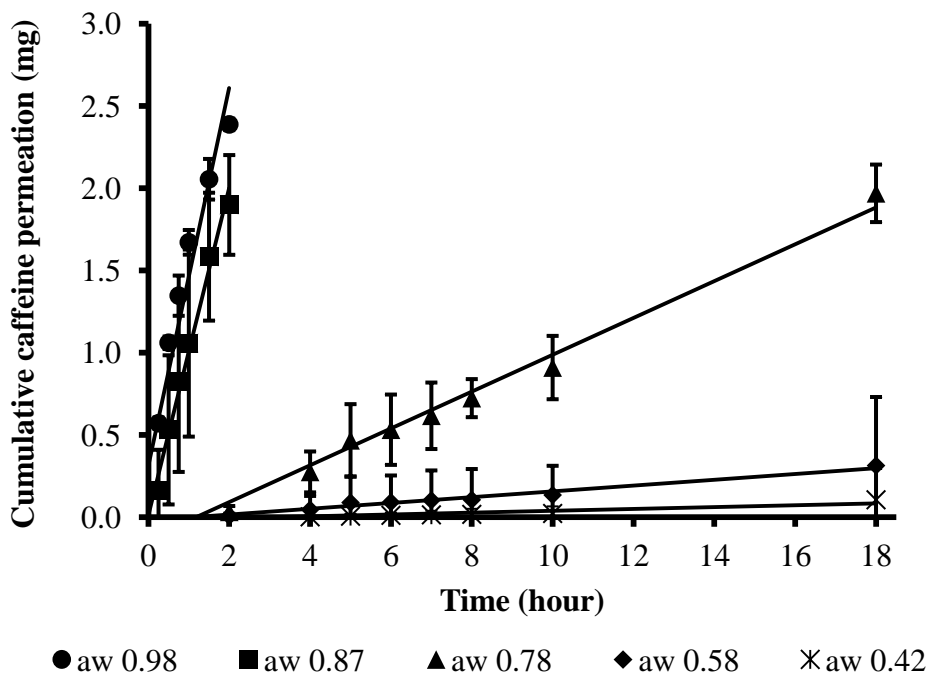


Figure 1: Effect of water activity of the vehicle on caffeine diffusion across Cuprophan membrane. Each data point represents mean \pm standard deviation (n=6).

In vitro drug release studies were performed across Cuprophan and silicone membrane to systematically evaluate the effects of topical vehicles' water activity on its drug release properties. Synthetic membranes are devoid of heterogeneity and have been extensively used to investigate formulation variables and associated drug release phenomena (Houk, 1988).

Release studies were performed utilizing Cuprophan membrane (semi-permeable hydrophilic porous membrane). In order to avoid differences in transmembrane osmotic pressure gradient, receptor compartment was filled with either control or test vehicles with same water activity as caffeine solution taken in donor compartment. This precaution was undertaken to avoid the osmotic pressure difference across donor and receptor to act as a driving force for drug diffusion across Cuprophan membrane.

In observation, steady state flux of caffeine was found to decrease with reduction in water activity of test vehicles. Lowering of solution water activity by one unit (from a_w -0.98 to a_w -0.87) resulted in ~3 fold reduction in the steady state flux of caffeine). Further, reduction in water activity of control vehicle to a_w -0.78, a_w -0.54 and a_w -0.42, drastically reduced the steady state flux by ~11.5, ~38.3 and ~115 fold, respectively. Drug concentration (or chemical potential) and diffusivity in formulation vehicle are two major rate controlling factors that greatly influence drug release from formulation vehicles (Al-Khamis et al., 1986). Caffeine concentration (or drug chemical potential) was found to be very similar in control and all test vehicles utilized for drug release studies (table 2)]. However, it is very intriguing that caffeine release flux (across Cuprophan membrane) from test vehicle of low water activity (a_w -0.78) was several fold (12 fold) lower than control vehicle (a_w -0.98). Graphical plot figure 1 depicts drug release across Cuprophan membrane, from control and test vehicles of different water activity.

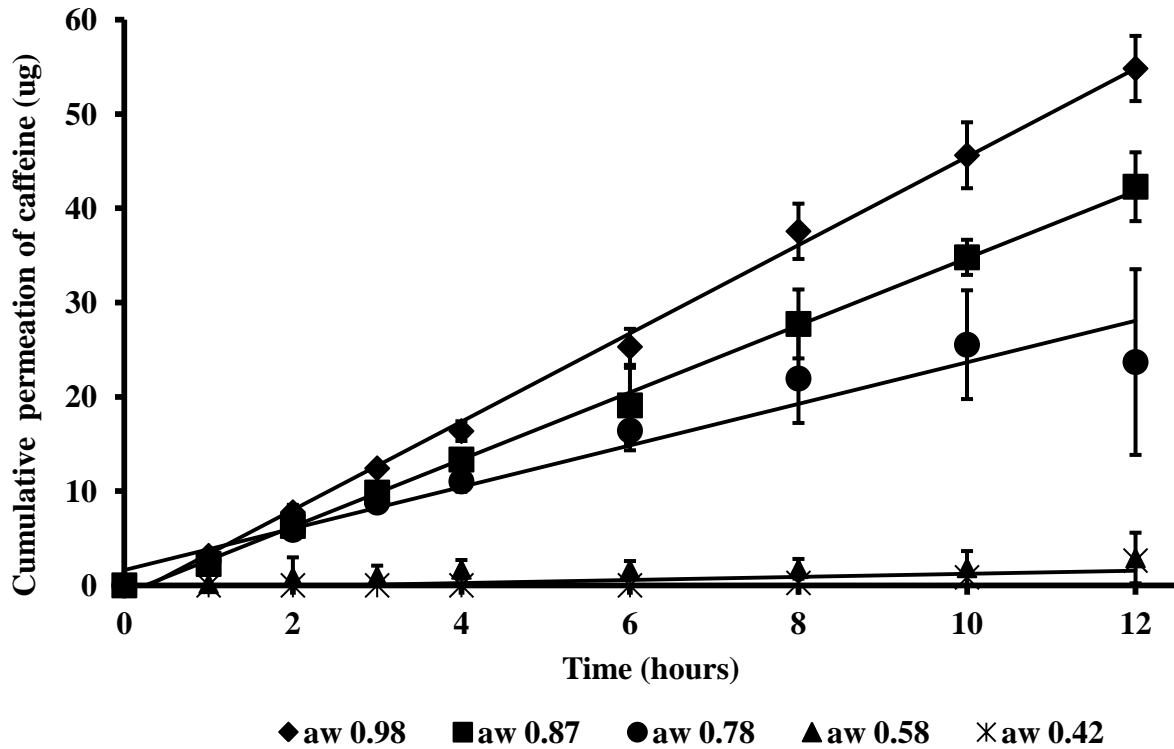


Figure 2: Effect of water activity of the vehicle on caffeine permeation flux across silicone membrane. Each data point represents mean \pm standard deviation (n=6).

Further, release studies were performed across a non-porous hydrophobic membrane (silicone membrane) in order to validate the drug release phenomenon observed in case of Cuprophan membrane. Here, the rate of transmembrane drug transport was dependant on water activity of the vehicle. Although, similar phenomenon was observed in case of release studies across Cuprophan membrane, there was a significant difference in the magnitude in the amenability. In observation, when water activity of formulation vehicle was lowered, the drug diffusion flux across silicone membrane was found to diminish (figure 2).

Drug diffusivity in a topical vehicle is inversely proportional to medium viscosity (could be modeled using Stokes-Einstein equation). An increase in viscosity was observed when water

activity of test vehicles was lowered, due to incorporation of lithium chloride (table 3). According to Stokes-Einstein equation, diffusion coefficient of caffeine was expected to reduce only by a factor of 2 fold, in case of $a_w=0.78$ test vehicle ($3.26 \times 10^{-6} \text{ cm}^2/\text{s}$) versus control ($a_w=0.98$) ($7.15 \times 10^{-6} \text{ cm}^2/\text{s}$). However, from diffusion studies across Cuprophan membrane, a resultant 12 fold reductions in caffeine release/diffusive flux was observed for $a_w=0.78$ group versus control. Thus, it can be inferred here that lowering water activity of the formulation vehicle had profoundly affected the rate of drug release/diffusion from formulation vehicles through other mechanisms besides lowering drug diffusion coefficient formulation viscosity related effects.

4.2. Mathematical Modeling

Water activity vehicle (a_w) (22°C)	Caffeine concentration (molar) (22°C)	Viscosity (centipoises) (22°C)	Theoretical modeling (Stokes-Einstein) of caffeine diffusion coefficient in water activity vehicles (cm^2/s)	Experimental determination of caffeine diffusive flux across Cuprophan membrane (mg/0.6 cm^2/hour)
0.98 (control)	~0.08	0.89	7.15×10^{-6}	1.15 ± 0.03
0.87	~0.08	1.23	5.17×10^{-6}	0.42 ± 0.08
0.78	~0.08	1.95	3.26×10^{-6}	0.10 ± 0.01
0.54	~0.09	2.75	2.13×10^{-6}	0.02 ± 0.01
0.42	~0.10	3.64	1.75×10^{-6}	0.01 ± 0.001

Table 3: Physicochemical properties of test vehicles of varied water activity

Each data represents mean \pm standard deviation (n=6)

Aforementioned results had invoked extreme curiosity and in order to provide functional and more direct evidence, qualitative dye diffusion study was designed to visually characterize the influence of water activity on solute diffusivity in water activity vehicles. Methylene blue was used as a model dye and a time lapse observation in bulk diffusivity in control, a_w -0.78 and a_w -0.42 vehicles are shown in figure 3a, 3b and 3c. Dye diffusivity in control vehicle (a_w -0.98) was found to be instantaneous and rapid, yielding a homogenous solution at the end of 2 hours. However, in case of a_w -0.78 and a_w -0.42 test vehicles, rate of dye diffusion was observed to be very slow.

Viscosity of the vehicle medium is expected to slow down solute diffusivity. From Stokes-Einstein relationship, diffusion coefficient of methylene blue would be expected to reduce only by 2 fold between control (a_w -0.98) and a_w -0.78 test vehicle. However, it took longer than 12 hours for the dye to diffuse down the medium in a_w -0.78 test vehicle but only 2 hours in case of a_w -0.98 vehicle.

4.3. Qualitative Dye Diffusion Study

In conjunction, separate set of dye diffusion studies were performed utilizing sucrose solution which acted as viscosity controls for the test vehicles. The latter set of dye diffusion studies presumed to be an efficient tool to decouple viscosity related effects from water activity in governing the bulk diffusivity of methylene blue. Sucrose solution was prepared at two concentration levels 20% and 31% w/v in deionized water to match the viscosity of a_w -0.78 and a_w -0.42 test vehicles, respectively. It was very interesting to observe that methylene blue dye took comparatively lesser time for complete diffusion in case of 20% w/v sucrose solution (viscosity control) versus a_w -0.78 test vehicle. In case of a_w -0.78 test vehicle (1.9 cP), it took ~16 hours (picture not shown) to achieve complete dye diffusion whereas in its viscosity control

(sucrose solution – 20% w/v, viscosity - 1.9 cP) complete diffusion was achieved in just ~10 hours. Similar trend was observed in case of a_w -0.42 test vehicle (3.6 cP) and its viscosity control. It took ~44 hours for complete dye diffusion in case of a_w -0.42 test vehicle (3.6 cP) versus ~24 hours for sucrose solution (31% w/v, viscosity - 3.6 cP).

It was evident that water activity of solution had overwhelming control over solute (methylene blue dye) diffusivity compared to viscosity. Owing to relatively low free water content in case of a_w -0.78 and a_w -0.42 test vehicles, methylene blue molecules (methylene blue dye) had to endure a more tortuous pathway in order to diffuse through the medium. Hence, the bulk diffusion of methylene blue assumed longer time than anticipated (Stokes-Einstein equation) in case of low water activity vehicles (a_w -0.78 and a_w -0.42) compared to respective viscosity controls.

In retrospect, water activity was the predominant reason for anomaly observed in caffeine release behavior from various water activity vehicles. Diminishing water activity of formulation vehicles had apparent rate-controlling like (non-linear) effects on its drug releasing properties. Water activity could be a critical physicochemical property of formulation vehicles that can detrimentally affect the drug release characteristics if not controlled appropriately.

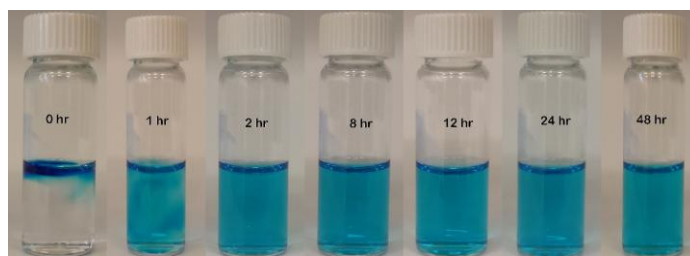


Figure 3a: Time lapse observation of effect of water activity on solute (methylene blue) diffusivity in deionized water ($a_w=0.98$)

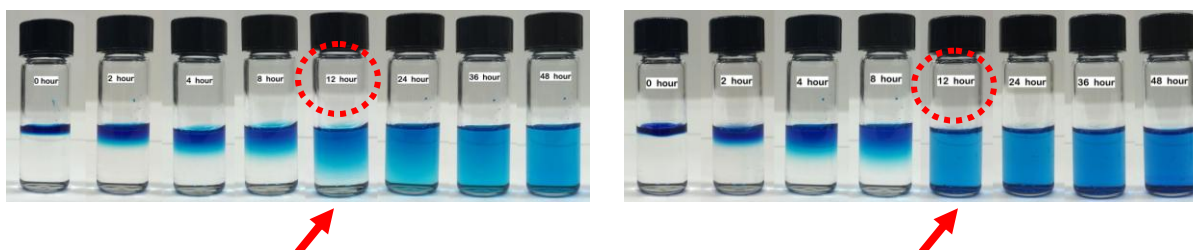


Figure 3b: *Left:* Time lapse observation of effect of water activity on solute (methylene blue) diffusivity in formulation vehicle ($a_w=0.78$; viscosity – 1.9cP). *Right:* Time lapse observation of solute diffusion in viscosity control for the $a_w=0.78$ formulation vehicle (20% w/v sucrose solution in deionized water, viscosity – 1.9 cP)

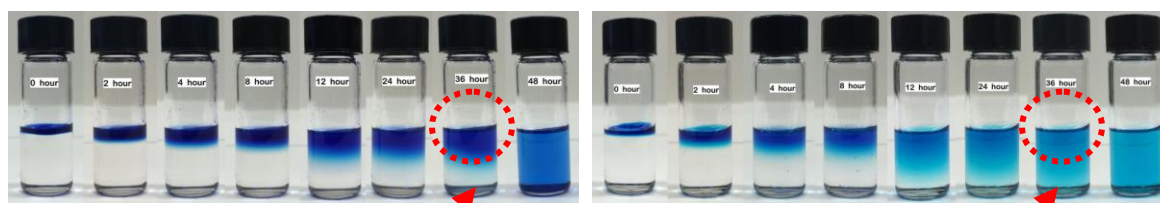


Figure 3c: *Left:* Time lapse observation of effect of water activity on solute (methylene blue) diffusivity in formulation vehicle ($a_w=0.42$; viscosity – 3.6 cP). *Right:* Time lapse observation of solute diffusion in viscosity control for the $a_w=0.78$ formulation vehicle (31% w/v sucrose solution in deionized water, viscosity – 3.6 cP)

5. Conclusion

Drug diffusion/release across model synthetic barriers (cellulosic and silastic) from a topically applied vehicle was influenced by water activity of the solution. Drug transport studies reveal that caffeine diffusive flux is significantly affected by low water activity of formulation vehicles. Mathematical modeling suggest that water activity, in addition to viscosity, exerts apparent rate controlling properties on drug diffusion within formulation vehicles and consequently affecting drug release. Qualitative dye diffusion studies validate that drug diffusion is relatively slow in low water activity vehicles and support the findings from drug transport study and mathematical modeling.

CHAPTER 3

**MECHANISTIC INVESTIGATION OF WATER ACTIVITY EFFECTS AT
FORMULATION VEHICLE-SKIN INTERFACE AND INFLUENCE ON SKIN DRUG
DELIVERY**

1. Objective

In this objective, effects of water activity on topical drug delivery at vehicle-skin interface were studied using simple topical vehicles of diverse water activity. Utilizing Franz diffusion cells, drug transport studies were performed to evaluate the effects of water activity on *in-vitro* drug delivery and drug permeation using porcine skin model. For a broad spectrum investigation of water activity effects at vehicle-skin interface, *in-vitro* permeation studies were performed using model drugs of varied physicochemical properties [log P ranging between (-) 1.56, (-) 0.79 and 1.17]. In addition, effects of water activity on topical drug delivery under finite/infinite dosing conditions, skin hydrodynamics and barrier properties were also investigated. Also, *in-vitro* permeation studies were undertaken to investigate the role of hydrating agents on topical drug delivery upon inclusion in low water activity vehicles. Histological investigation was undertaken to study the role of hydrating agents on barrier property restoration in porcine skin model.

2. Materials

Caffeine, nicotine, acyclovir, and sodium fluorescein were purchased from Sigma Aldrich (St. Louis, MO). Propylene glycol was acquired from BASF chemical company (Tarrytown, NY). Porcine skin was acquired from a local slaughter house and epidermis was

harvested using heat separation technique. All solutions and dilutions were prepared using purified deionized water (resistivity ≥ 18.2 m Ω .cm, Barnstead Nanopure Diamond™, Barrington, IL).

3. Methods

3.1. *In vitro* drug permeation studies across porcine epidermis

In vitro permeation studies were performed to investigate the effects of water activity of topical vehicles on drug permeation across model biological membrane (heat separated porcine epidermis). IVPT was performed using vertical Franz diffusion cells and the experimental setup remained similar to *in vitro* release studies involving synthetic membranes. Caffeine (log P: -0.79; mol. wt.: 194.19 g/mol) was utilized as a model drug and 15 mg/mL drug solution was prepared in control (a_w -0.98) and test vehicles (a_w -0.78). The active diffusion area for drug permeation was maintained at 0.64 cm². Permeation studies were performed under both infinite and finite dosing conditions. Two hundred microliter and 20 μ L of formulation vehicles were utilized for infinite and finite dose studies, respectively.

Utilizing similar experimental conditions, *in-vitro* permeation studies were also extended for model drugs like acyclovir (log P: -1.56; mol. wt.: 225.21 g/mol) and nicotine (log P: 1.17; mol. wt.: 162.23 g/mol). Model drugs caffeine, acyclovir and nicotine were chosen based on their broad spectrum physicochemical properties. Drug solution was prepared in control (a_w -0.98) and test water activity vehicles (a_w -0.78) and employed for permeation studies at following concentration: Nicotine – 50 mg/mL (1g/mL) and acyclovir – 1 mg/mL (1.5 mg/mL).

3.2. Effect of varying levels of propylene glycol (humectant) on skin permeation of model drug from low water activity vehicle (a_w -0.78)

In vitro permeation testing, under infinite dosing condition, was performed in order to investigate the effects of propylene glycol (humectant) on skin permeation of drugs from low water activity vehicle (a_w -0.78). Porcine epidermis was used as a model biological membrane and the active diffusion area for drug permeation was maintained at 0.64 cm². Sodium fluorescein is utilized as a model drug in this study owing to its analytical sensitivity. Two hundred microliter of sodium fluorescein drug solution (1mg/mL) was prepared in a_w -0.78 vehicle and added to donor compartment which served as control group. Similarly, three different sets of sodium fluorescein drug solution (1mg/mL) prepared in a_w -0.78 vehicle containing 10, 20 and 30% v/v propylene glycol, which served as test group. Water activity was retested for test vehicles after inclusion of propylene glycol. Receiver compartment was filled with solution of same water activity as the donor (without drug) in order to maintain constant osmotic pressure across donor and receiver compartments. At predetermined time points, 0.2 ml samples were withdrawn from receiver compartment to analyze the amount of sodium fluorescein permeated across porcine epidermis from low water activity vehicles (a_w -0.78) containing propylene glycol.

3.3. Determination of effect of water activity of vehicle on dermal penetration of topically applied drugs

Franz cell setup was utilized to investigate the effect of water activity of topical vehicle on dermal penetration of model drug caffeine. Porcine epidermis was utilized as a model biological membrane and was sandwiched between donor and receiver compartment in Franz diffusion cell apparatus. Donor compartment was filled with 500 μ L control and test vehicles containing 15 mg/mL caffeine. The receiver compartment was maintained empty. The donor

compartment and sampling port of the receiver compartment were covered with paraffin film. After 8 hours of treatment, the epidermis was rinsed with deionized water to remove excess drug solution off the surface. Followed by, the epidermis was digested in 1N sodium hydroxide solution using a tissue homogenizer, solution filtered and drug content analyzed using a suitable analytical method. The active diffusion area was maintained at 0.64 cm^2 and absolute amount of caffeine loaded in epidermis was recorded as the extent of dermal penetration of drug.

3.4. Determination of skin hydrodynamics

The effect of water activity of formulation vehicle on skin hydration status was determined using porcine epidermis. Porcine epidermis was equilibrated to ambient conditions ($22^\circ \text{ C}/60\% \text{ RH}$) for 2 hours, as a prerequisite. Followed by, pre-weighed strip of porcine epidermis (2 cm x 2 cm) was mounted on Franz diffusion cell apparatus with stratum corneum side facing the donor compartment. Donor compartment was filled with test vehicles ($a_w=0.78$ and $a_w=0.54$) and receiver compartment was kept empty. Donor compartment was then covered with paraffin film to prevent water escaping from formulation vehicles. After 6 hours of equilibration, epidermis was blotted with Kimwipes[®] to remove excess solution sticking on the skin surface and weighed again. The difference in weight of epidermis pre- and post-treatment with test vehicles was recorded as resultant percent water content (test group). In order to determine the baseline hydration status (control), pre-weighed epidermis strip (2 cm x 2 cm) was equilibrated to ambient conditions ($22^\circ \text{ C}/60\% \text{ RH}$) and subsequently stored in hot air oven ($40^\circ \text{ C}/25\% \text{ RH}$) for an extended period. Followed by, weight of dried epidermis strip was determined. Difference in pre-and post-drying weight was recorded as the baseline percent water content of porcine epidermis.

3.5. Histology

Histological investigation was undertaken to investigate the potential structural changes in full thickness human cadaver skin following exposure to formulation vehicle of low water activity (a_w -0.78). A strip of skin (2 x 2 cm) was mounted on Franz diffusion cell apparatus with the stratum corneum side facing donor compartment. Topical formulation vehicle of low water activity (a_w -0.78) was taken in the donor compartment while receiver compartment was maintained empty. In addition, low water activity vehicle (a_w -0.78) containing propylene glycol (1:1) was also investigated as one of the test formulations and deionized water (a_w -0.98) served as control. Skin was treated with formulation vehicles for a period of 6 hours followed by cross-sections were prepared for histological investigation. Briefly, skin cross-sections were flash frozen in liquid nitrogen and were subjected to freeze drying. Freeze dried skin sections were coated with platinum using a sputter coater under argon gas for observation under JSM-7800F PRIME field emission scanning electron microscopy (Jeol, Tokyo, Japan).

3.6. Analytical methods

All chemical analysis and drug quantification in transport studies were performed using HPLC analytical method. The analytical conditions utilized for all model drugs are as follows. Reversed phase chromatography was performed for quantification of model drug caffeine. HPLC system consists of Waters[®] 1525 binary pump (Waters[®] Corporation, Milford, MA) equipped with Waters[®] 717 plus autosampler equipped with UV absorbance detector. Chromatographic separation was achieved under isocratic mode at a flow rate 1 mL/min on Symmetry[®] C18 (4.6 x 150 mm; 5 μ) reversed phase analytical column. Caffeine was eluted using mobile phase consisting of 50% v/v methanol and 50% v/v water system (50:50 v/v) at analytical wavelength 254 nm. The chromatogram was analyzed using Breeze[®] software system.

3.7. Statistical treatment

GraphPad InStat 3 software was used for statistical analysis. One-way ANOVA was used to determine the level of significance for correlation between parameters and $P < 0.05$ was considered as the acceptable level of significance.

4. Results and Discussion

4.1. Effect of water activity of the vehicle on *in vitro* drug permeation across the porcine epidermis

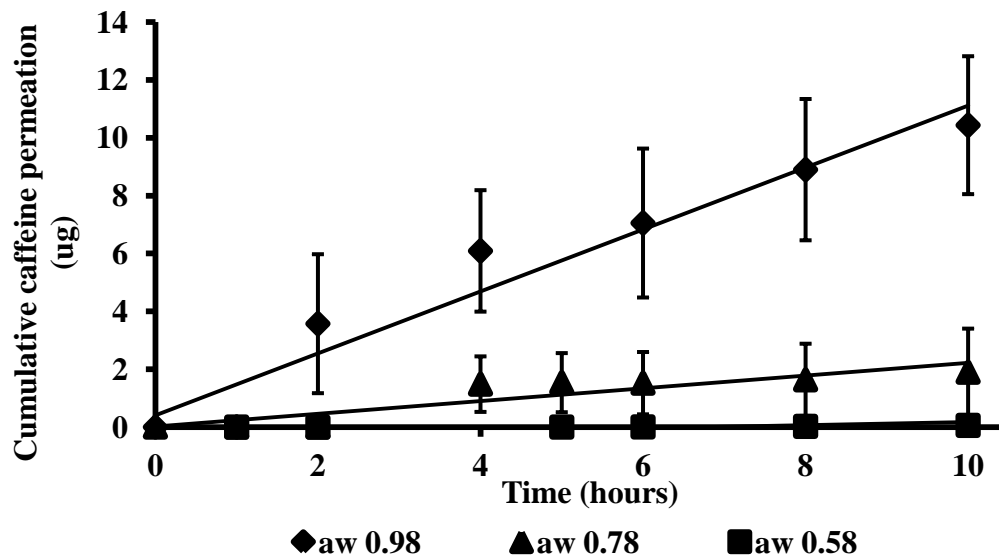


Figure 4: Effect of water activity of the vehicle on caffeine permeation flux across porcine epidermis under infinite dosing conditions. Each data point represents mean \pm standard deviation (n=6)

Porcine epidermis (heat separated) model was utilized to study the effects of topical vehicles' water activity on drug permeation behavior in a biological membrane. Porcine epidermis was elected as a model membrane owing to the fact that its stratum corneum lipid composition and SC layer thickness closely resembles with that of human skin (Simon and Maibach, 2000). Figure 4 represents cumulative caffeine permeation with time under infinite

dosing conditions across porcine epidermis. Cumulative permeation of caffeine was found to decrease when water activity of formulation vehicle was lowered. The steady state flux of caffeine in case of control vehicle was relatively higher than lower water activity vehicles (1.071 and 0.219 $\mu\text{g}/0.6\text{cm}^2/\text{hr}$ for control and a_w -0.78 vehicle, respectively. $P < 0.05$)

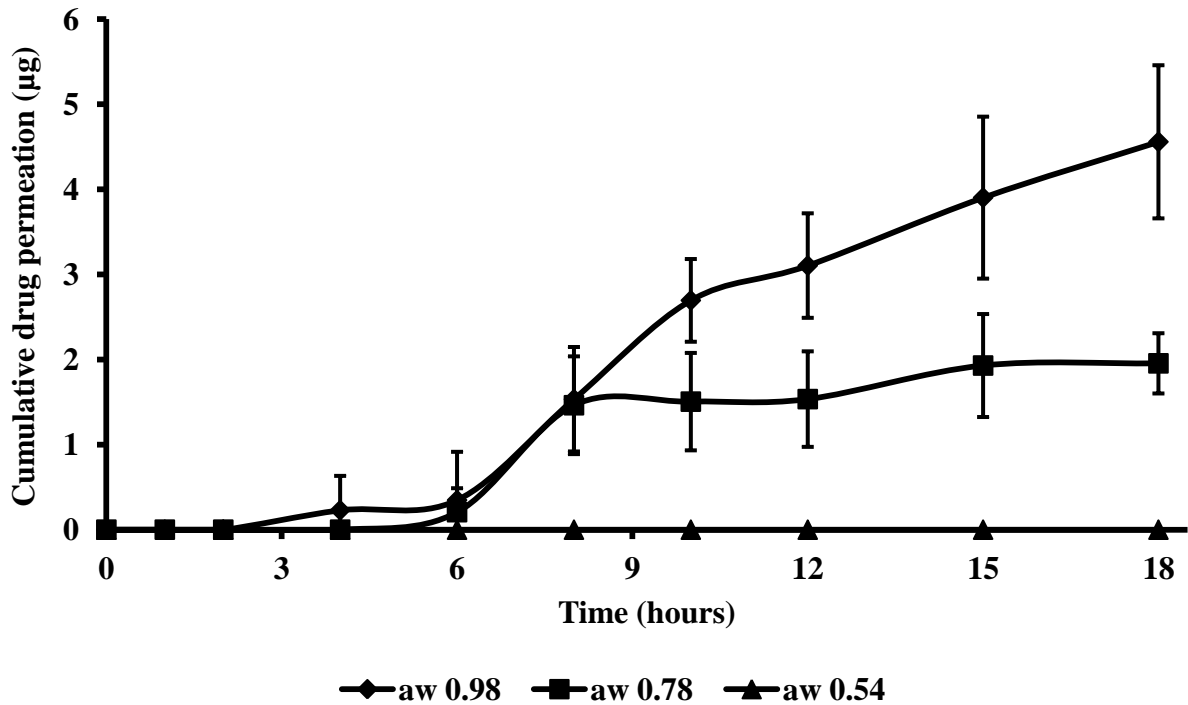


Figure 5: Effect of water activity of the vehicle on caffeine permeation flux across porcine epidermis under finite dosing conditions. Each data point represents mean \pm standard deviation (n=6)

Traditionally, infinite dose technique has been most frequently used to study percutaneous absorption events such as drug diffusion properties and penetration enhancement mechanisms. During infinite dose studies *in vitro*, the skin is completely bathed by donor and receptor solution and such an incidence is unrealistic under clinical or “in use” conditions. Apparently, transient changes in drug concentration are negligible hence changes in permeation profile due to vehicle

drying or metamorphosis of the formulation cannot be effectively studied, under infinite dose condition.

Drug permeation behavior under finite dosing technique was reported to closely mimic clinical/realistic conditions as the amount of vehicles applied is typically in the range of few milligrams per square centimeter of skin. (Franz, 1977, Franz, 1975, Seta et al., 1992, Kubota and Yamada, 1990).

Consequently, *in vitro* permeation studies were performed under finite dosing conditions as well, to ascertain drug permeation behavior from low water activity vehicles, to closely mimic “in-use” conditions. Twenty microliter of drug solution (300 μg caffeine content) was utilized for finite dose study versus 200 μL (3 mg caffeine content) utilized for infinite dosing. Cumulative caffeine flux was found to decrease with lowering water activity of formulation vehicles and was found to be at least 3 fold higher for control vehicle versus test vehicle with a a_w -0.78 (figure 5). In summary, low water activity of topical vehicles conclusively affected drug permeation behavior across porcine epidermis, a model biological membrane.

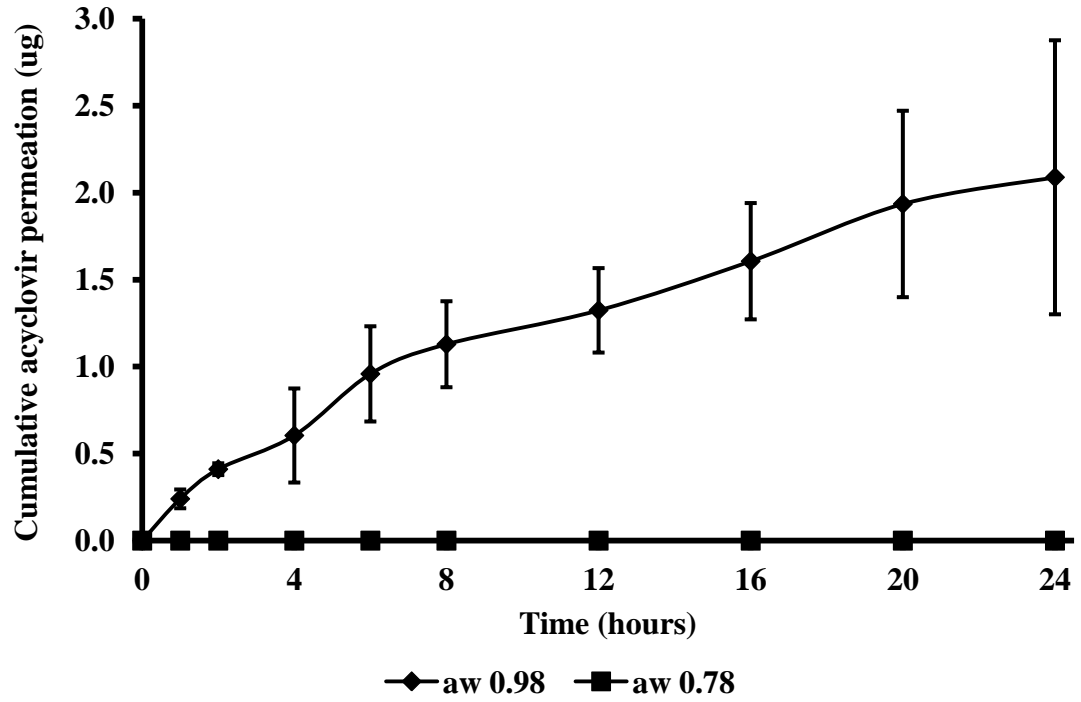


Figure 6: Effect of vehicle water activity on acyclovir permeation [log P (-) 1.56] across porcine epidermis under infinite dosing conditions. Each data point represents mean \pm standard deviation (n=6)

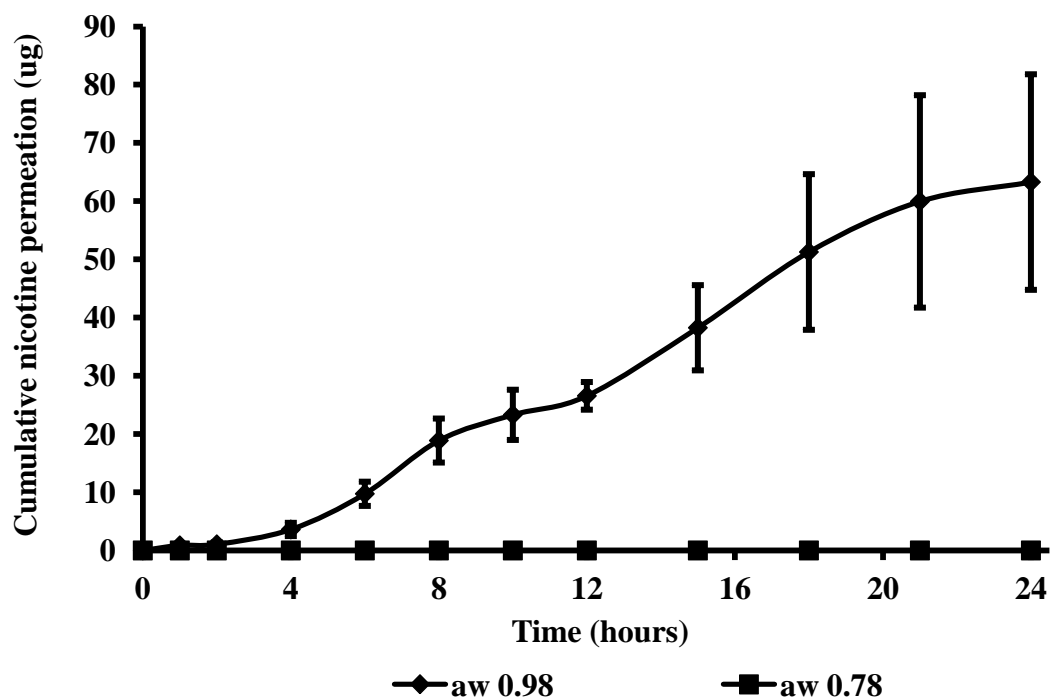


Figure 7: Effect of vehicle water activity on nicotine permeation [log P 1.17] across porcine epidermis under infinite dosing conditions. Each data point represents mean \pm standard deviation (n=6)

In addition to caffeine (log P: -0.79; mol. wt.: 194.19 g/mol), infinite dose IVPT studies were extended for model drugs acyclovir (log P: -1.56; mol. wt.: 225.21 g/mol) and nicotine (log P: 1.17; mol. wt.: 162.23 g/mol). In observation, cumulative permeation flux of all model drugs from test formulation (a_w -0.78) was several folds low (almost infinitesimal) compared with that of their respective controls (Figures 6 and 7). It is noteworthy that low water activity of formulation vehicle (a_w -0.78) had affected permeation of drugs with broad spectrum physicochemical properties.

4.2. Effect of water activity of the vehicle on skin hydrodynamics

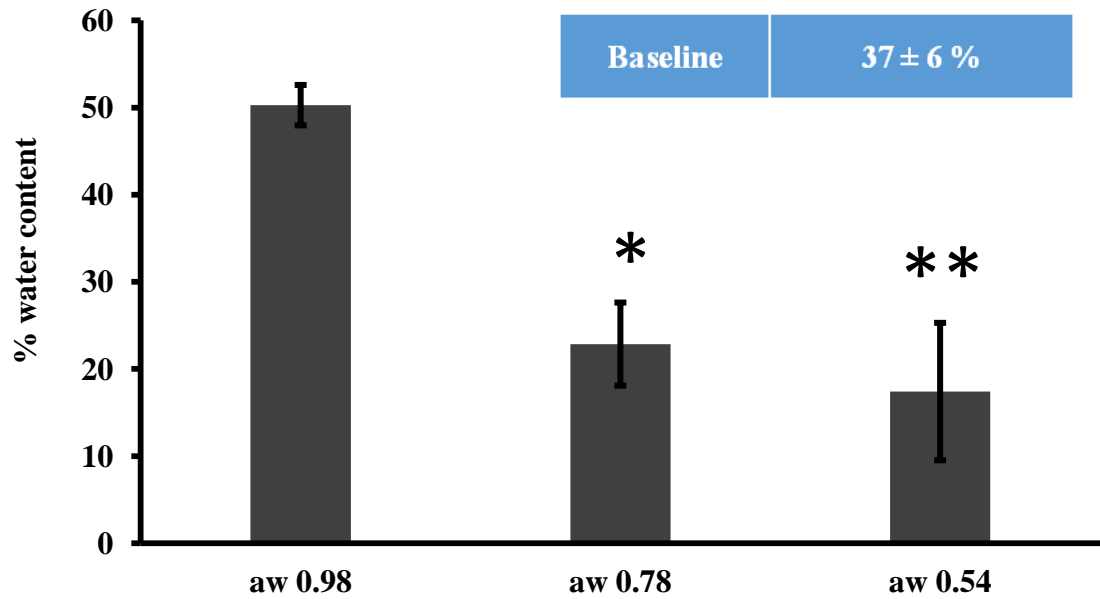


Figure 8: Percent water content in porcine epidermis after treatment with water activity vehicles

Figure 8 represents the resultant water content in porcine epidermis post 6 hours treatment with topical vehicles of varied water activity. The resultant hydration levels (exhibited as % values compared to baseline) of porcine epidermis post treatment with control vehicle (a_w -0.98) was found to be $50 \pm 3\%$. Rise in hydration levels here was an expected behavior. However, porcine epidermis treated with low water activity vehicle groups (a_w -0.78 and a_w -0.54) lowered the degree of hydration and resulted in $< 20\%$ water content (which was lower than the baseline values $\sim 37 \pm 6\%$).

The hydration level measurement following exposure to different water activity formulations showed that hydration levels increased when hydrated with water (control vehicle a_w -0.98), as expected. Notably, when exposed to lower water activity test solutions, epidermis would lose baseline water, leading to an apparent dehydration effect. The dehydration phenomenon observed here could be attributed to osmotic induced drying effects exerted by low

water activity of formulation vehicles. The extent of skin water loss depends on how low the water activity is and water activity gradient established between the outer layer of skin and formulation vehicle.

It was well established that aqueous based solution systems with relatively low water activity values exhibits strong osmotic dehydration effects on cellular materials (Gekas et al., 1998, Rastogi and Raghavarao, 1994, Toledo, 2007, Sereno et al., 2001). From mathematical equation described below, a logarithmic relationship exists between water activity and osmotic pressure for aqueous based systems. By virtue, lowering water activity of a system tends to increase its osmotic pressure multiple fold.

$$\pi = (-)2.3026 * \frac{RT}{V} * \ln a_w$$

where, π is the osmotic pressure, R is the gas constant, T is the temperature, V_m molar volume of water in the system and a_w is the water activity of the system.

State of hydration of skin is a critical factor which determines the rate of percutaneous absorption of drug molecules. Enhanced skin hydration levels typically result in net 'free' water molecules within the tissue which could act as solvent for predominantly polar permeants. Also, free water molecules in the stratum corneum region has potential to alter the permeant solubility leading to enhanced partitioning into the skin membrane (Williams and Barry, 2012). Elevated hydrating levels of skin was also reported to alter lipid bilayer packing resulting in elevated hydrophilic drug fluxes (Alonso et al., 1995, Alonso et al., 1996, Williams and Barry, 2012). Increased skin hydration levels have been shown to clearly enhance the skin flux of both hydrophilic and lipophilic drug moieties (Idson, 1978, Roberts and Walker, 1993). On contrary, osmotic stress induced drying effects were reported to cause structural re-organization of lipid

macromolecular assemblies in the stratum corneum leading to impaired skin permeability (Nowacka et al., 2012).

It was evident that low water activity of formulation vehicles ($a_w=0.78$) exhibited greater tendency to induce dehydration in model biological tissue (porcine epidermis) upon topical application. A similar dehydrating effect in human skin tissue could be anticipated when topical formulations with low water activity were to be utilized for practical drug delivery application. Under such circumstances, low water activity of topical vehicles would undoubtedly limit or affect skin permeability status or flux of therapeutic agents formulated within.

4.3. Effect of water activity of the vehicle on dermal penetration of drugs

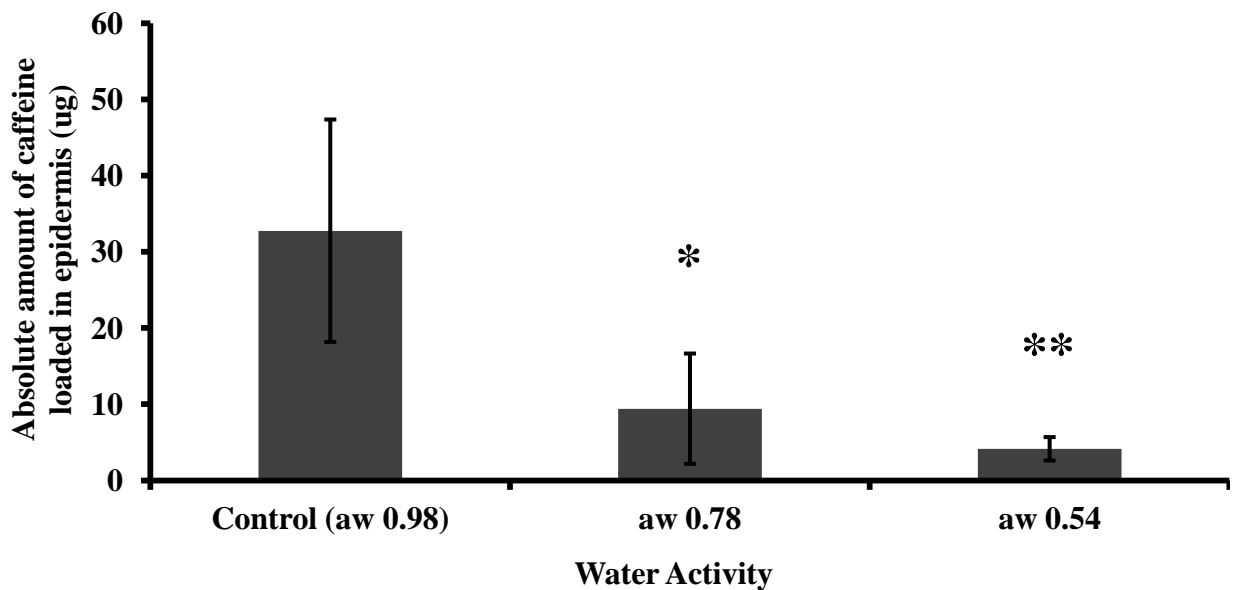


Figure 9: Effect of water activity of the vehicle on caffeine accumulation in porcine epidermis after pretreatment for 8 hours [n=6; * ** P < 0.001 compared to control ($a_w=0.98$)]

Most dermatological disorders manifest in the viable epidermis/dermis region hence topical dermatological preparations are aimed at delivering therapeutic agents regionally to deeper skin layers. This in turn depends on myriad of factors governing nature of drug, formulation properties and complex interplay at vehicle-skin interface. Applying this context to present investigation, we studied the effect of formulation vehicles' water activity on skin penetration of the model drug caffeine.

After treating porcine epidermis with control and test formulation vehicles (a_w -0.98, a_w -0.78 and a_w -0.54) for 8 hours period, epidermis piece was digested in 1N sodium hydroxide to determine the absolute amount of caffeine loaded in it. From figure 9, it can be found that $32.76 \pm 14.60 \mu\text{g}$ caffeine was found in epidermis treated with control vehicle whereas, $9.40 \pm 7.24 \mu\text{g}$ caffeine was found in epidermis treated with low water activity vehicle (a_w -0.78) ($P < 0.001$ at 95% confidence interval). In case of test vehicle a_w -0.54 the amount of caffeine loading in epidermis was found to be even lower ($4.13 \pm 1.60 \mu\text{g}$) compared to control and a_w -0.78 test vehicle ($P < 0.01$).

The data furnished in figure 7 corroborates that drug penetration in skin (porcine epidermis - model biological membrane) is limited by low water activity of test formulation vehicles (a_w -0.78 and a_w -0.54). This could be attributed to collective effects of low water activity on (i) drug release and diffusivity from formulation vehicle, (ii) limited drug permeation through skin and (iii) dehydration effects on skin tissue. In retrospect, water activity of formulation vehicles was found to be critical in determining the extent of skin penetration of drugs.

5.4. Histological Evaluation

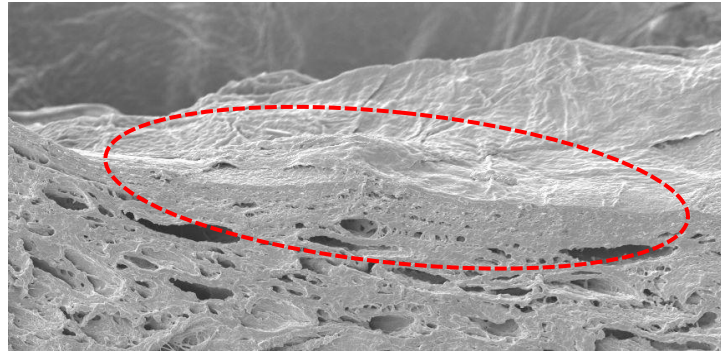


Figure 10a: Representative SEM picture of human cadaver skin treated with control vehicle (a_w 0.98)

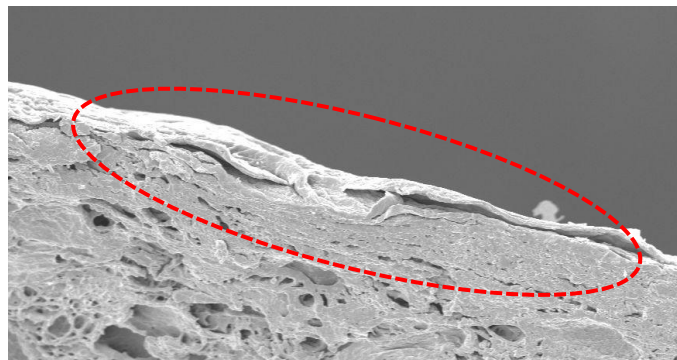


Figure 10b: Representative SEM picture of human cadaver skin treated with test formulation vehicle (a_w 0.78)

Histological evaluation utilizing scanning electron microscopy was performed to investigate water activity led structural changes in the stratum corneum layer in human cadaver skin. Figure 10a and 10b, represents high resolution SEM images obtained for the cadaver skin treated with control ($a_w-0.98$) and test water activity vehicle ($a_w-0.78$). Cadaver skin treated with control ($a_w-0.98$) served as control for cadaver skin treated with low water activity formulation vehicle ($a_w-0.78$).

The stratum corneum in control skin exhibited tightly bound corneocytes layer with minimal or absence of any intercellular space. Opposed to control skin, stratum corneum in cadaver skin treated with test vehicle ($a_w-0.78$) was found to exhibit very loosely bound corneocytes layer. Moreover, the individual corneocytes layer was observed to remain detached from subsequent layers. This trending behavior in SC microstructural modifications was attributed to varying degrees of dehydration effects exerted by low water activity of vehicle ($a_w-0.78$). The drying effects were shown to be associated with significant structural modifications in stratum corneum layer sabotaging the transport pathways available for drug permeation through skin.

Thus, low water activity of topical formulation could lead to structural modifications in stratum corneum layer and plausibly affect the permeation of topically applied drugs by the way of impairing continuous transport pathways available in skin. This was potentially caused by osmotic shrinkage of corneocytes, which would be in agreement with the data from skin hydrodynamics and skin penetration experiments.

4.4. Investigation of propylene glycol (humectants) in enhancing skin permeability of drugs from low water activity formulation vehicles and associated effects on skin

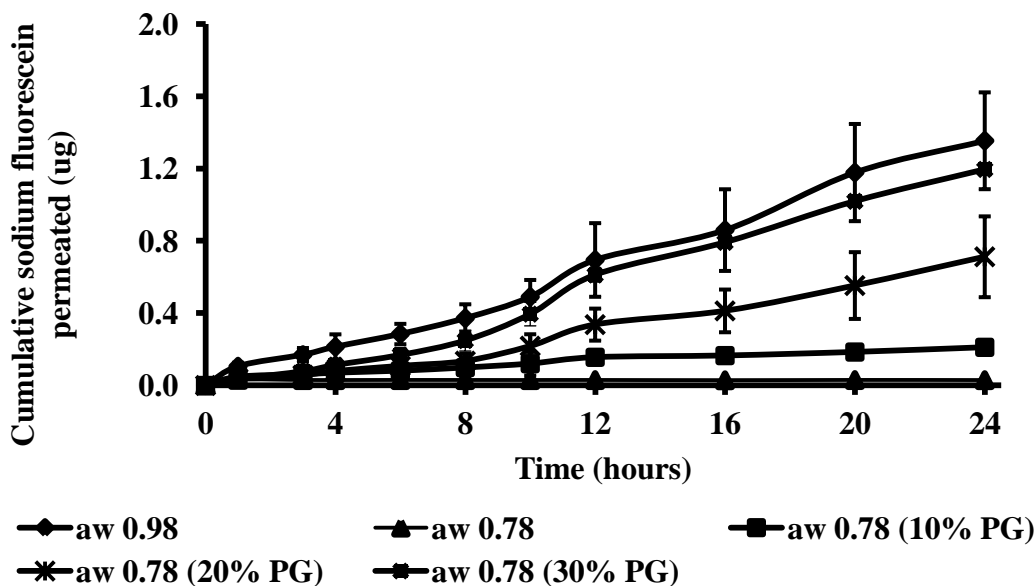


Figure 11: Effect of propylene glycol on permeation behavior of sodium fluorescein from various water activity vehicles (n=6)

From figure 11, it can be observed that incremental inclusion of small molecule humectants, eg. propylene glycol (PG) in low water activity vehicle (a_w -0.78) had profound effects on enhancing solute permeation across skin. Sodium fluorescein (SF) was utilized as a model drug to study the humectants effect owing to its analytical sensitivity. From *in vitro* permeation studies across porcine epidermis, cumulative SF flux from low water activity test vehicle (a_w -0.78) was found to be negligible (even after prolonged equilibration). Whereas, SF flux from control vehicle (a_w -0.98) was found to be several folds higher, comparatively. The low water activity of test vehicle (a_w -0.78) had significantly affected the permeation of sodium fluorescein across porcine epidermis and was in good agreement with permeation data obtained

for other model drugs (caffeine, acyclovir and nicotine). However, incremental inclusion of propylene glycol in the test vehicle ($a_w-0.78$) had led to a dose dependant enhancement in SF permeation flux. The trend for SF permeation flux enhancement with propylene glycol dose, from low water activity test vehicle ($a_w-0.78$) was as follows: $a_w-0.78 < a_w-0.78$ (10% PG) $< a_w-0.78$ (20% PG) $< a_w-0.78$ (30% PG) $< a_w-0.98$. Utilization of 30% v/v propylene glycol in low water activity vehicle ($a_w-0.78$) had enhanced the SF permeation flux to the levels observed in case of control vehicle ($a_w-0.98$). This phenomenon could be attributed to the ability of humectants to transiently increase skin hydration levels and associated permeability status of skin

On contrary, owing to strong water binding properties, humectants such as propylene glycol can be expected to lower water activity of aqueous systems. This was evident in case of test formulation ($a_w-0.78$) incorporated with varying levels of propylene glycol. From table 3, it can be observed that addition of propylene glycol had further lowered the water activity of test formulation vehicle ($a_w-0.78$). In earlier sections, we had demonstrated that relatively low water activity of formulation vehicle could diminish drug permeation across skin. However, it was interesting that SF flux was found to proportionately increase with propylene glycol levels despite a decreasing trend in lowering water activity of the formulation vehicle ($a_w-0.78$).

Formulation Vehicle	Water activity (a_w) (22° C)
Control vehicle	0.98
Test vehicle (a_w -0.78)	0.78
a_w -0.78 (10% v/v PG)	0.75
a_w -0.78 (20% v/v PG)	0.73
a_w -0.78 (30% v/v PG)	0.71

Table 4: Effect of propylene glycol levels on water activity of test formulation vehicle (a_w -0.78)

Pirot et al., had demonstrated that small molecule humectants (like glycerol and propylene glycol) had ability to penetrate into the stratum corneum following topical application. The hygroscopic nature of such humectants resulted in efficient binding of water molecules in the stratum corneum region and increased its overall water holding capacity (Pirot et al., 2003). Nowacka et al. had demonstrated that osmotic drying would cause structural re-organization of lipid macromolecular assemblies in the stratum corneum leading to impaired skin permeability. However, small molecule humectants (like glycerol and urea) had ability to protect lipid bilayer in the stratum corneum against osmotic drying and preserved its fluidity under dry conditions (Nowacka et al., 2012).

In conjunction, histology studies were undertaken to evaluate the hydrating effects of propylene glycol present in low water activity (a_w -0.78) vehicle, on structural changes in human cadaver skin. Briefly, the cadaver skin was treated with a_w -0.78 vehicle containing propylene glycol (1:1). Followed by, cross sections of the skin were acquired and observed under SEM to evaluate associated structural changes, if any. It can be observed from figure 12 that the stratum corneum layers were found to be intact versus skin treated with a_w -0.78 (figure 10b). Presence of propylene glycol in low water activity vehicle (a_w -0.78) could plausibly counteract the unfavorable effects of low water activity on skin dehydration and associated structural damage.

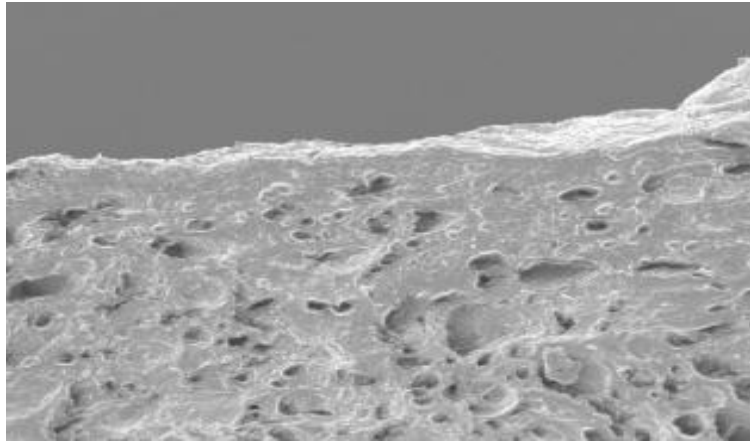


Figure 12: Representative SEM picture of human cadaver skin treated with propylene glycol and a_w -0.78 vehicle (1:1)

In conclusion, despite the low water activity of topical formulations, inclusion of propylene glycol could increase hydration levels in stratum corneum, maintain structural integrity of skin and promote drug permeability in skin.

5. Conclusion

Drug permeation across the porcine skin from a topically applied vehicle was measurably influenced by water activity of topical vehicles. Water activity effects on drug permeation (across biological membrane) were found to be universal for drugs of varied skin affinity.

Vehicles with low water activity altered the hydrodynamics of skin, and this was associated with corresponding impacts on the drug permeation. Inclusion of small molecule humectants like propylene glycol, retained skin hydrodynamics and counteracted water activity led effects on drug permeation.

CHAPTER 4

INVESTIGATION OF MANUFACTURING PROCESS PARAMETERS ON WATER ACTIVITY OF TOPICAL SEMI-SOLID CREAM (WATER-IN-OIL TYPE)

1. Objective

Topical cream products may possess numerous quality attributes that can affect the permeation of the drug through skin, skin retention of cream and patient acceptability which can further potentially impact therapeutic efficacy and safety³⁸. Few of the critical quality attributes are direct result of microstructural arrangement (Q3 characteristics) of the semi-solid cream products. Microstructural (Q3) properties of cream products are significantly affected by manufacturing process to an extent that even cream lots of Q1/Q2 (qualitative and quantitative) similarity result in varying degree of microstructural (Q3) arrangement when processed at different conditions. In previous chapters, profound investigation was undertaken to elucidate the mechanisms through which water activity influence topical drug delivery. In retrospect, water activity is a critical microstructural property that plausibly affects drug release and topical drug delivery. In the present chapter, focal point is to evaluate if variation in manufacturing process conditions could influence resultant water activity of a model semi-solid cream formulation. A model water-in-oil type cream formulation is utilized to study the effects process parameters like homogenization speed and time on resultant water activity of topical semi-solid cream.

2. Materials

Mineral oil USP, white wax NF, cetostearyl alcohol NF, propylene glycol NF and sodium borate NF were purchased from Spectrum chemical manufacturing Co., (New Brunswick, NJ).

Cuprophan membrane was purchased from Agilent technologies (Santa Clara, CA) and silicone membrane was obtained from SMI medical device manufacturer (Saginaw, MI). All solutions and dilutions were prepared using purified deionized water (resistivity ≥ 18.2 m Ω .cm, Barnstead Nanopure Diamond TM, Barrington, IL).

3. Methods

3.1. Preparation of water-in-oil type test cream formulations

Ingredients	Quantity (% w/w)
Cetostearyl Alcohol	12.5
White Wax	12
Mineral Oil	56
Sodium Borate	0.5
Water	19
Total	100

Table 5: Composition of model w/o type cream formulation used for manufacturing process investigation

Experimental batches of topical semi-solid cream formulation were prepared in order to investigate the effects of processing parameters on modulation of water activity. Two lots (1kg batch size) of qualitative and quantitatively similar water in oil type cream formulations were prepared by mixing oil phase and water phase (maintained at 70° C) using Silverson[®] L5M-A high shear mixer under varying process conditions (formulation I: mixing at 3500 rpm for 15 minutes; formulation II: mixing at 7000 rpm for 30 minutes). Mixing process was performed in a temperature controlled sealed glass beaker with limited head space in order to avoid loss of water

from formulation batches. After high shear mixing phase, both cream lots were allowed to cool at a steady rate (5°C/min) until the temperature reaches 45°C while mixing at 1500 rpm then stopped. The creams were then allowed to cool to room temperature in a closed jar and post 24 hour wait period, water content, drying rate (water loss kinetics) and water activity were tested.

3.2. Determination of water activity of test creams

Water activity was experimentally determined by dew point technique using AquaLab Series 3 (Decagon Devices Inc.). Briefly, a dollop of test cream was placed in sample cup holder and introduced into the sample chamber and water activity of the cream was directly read from the water activity meter.

3.3. Determination of total water content in test creams using thermogravimetry

Thermogravimetric analysis was performed to determine total water content (post process) and rate of water loss for the cream lots using Perkin Elmer[®] Pyris 1 TGA. To determine total water content, samples were loaded in an aluminum sample pan and heated using temperature ramp program (5°C/min) from 25°C to 150°C (under constant nitrogen purge) until constant weight loss was achieved. The mass loss represents total water content in cream after mixing/homogenization unit operation.

3.4. Determination of drying rate of test creams using thermogravimetry

To determine drying rate, samples were thermally equilibrated in an aluminum pan under constant temperature program ($37 \pm 1^\circ \text{C}$) for 24 hours. Drying rate under isothermal equilibration determines the water loss kinetics (microstructural differences) between cream formulations processed at varying mixing/homogenization conditions.

3.5. Determination of globule size distribution in test creams

Globule size distribution was determined using optical microscopy technique. Approximately, 10 mg cream formulation was directly weighed on a clean glass slide and thin film (~10 µm) was formed using film applicator (Gardco[®] Microm II applicator blade, Japan). Samples were viewed under bright field optical microscopy (Axiolab A1, Carl Zeiss, NY) under appropriate magnification and images (containing globules) were acquired using AxioVision software (Carl Zeiss, NY). Projectile diameter was then analyzed using image analysis suite in AxioVision.

3.6. Statistical treatment

GraphPad InStat 3 software was used for statistical analysis. One-way ANOVA was used to determine the level of significance for correlation between parameters and $P < 0.05$ was considered as the acceptable level of significance.

4. Results and Discussion

4.1. Effect of manufacturing process parameters on water activity of test cream formulations

Emulsion based cream formulations are thermodynamically unstable dispersion of two immiscible materials (water and hydrocarbons), kinetically stabilized using emulsifier/surfactant system. Due to multiple degree of interaction between aqueous–hydrocarbon-emulsifier system, cream formulations were hypothesized to encompass intricate polymeric network predominantly constructed with partly/completely swollen gel structure (emulsifier phase) containing interlamellarly fixed crystalline water (or bound water) and bulk/free water. (Gašperlin et al., 1994, De Vringer et al., 1987, Junginger, 1984). The concept of bound and free water associated with polymeric systems had been around for at least three decades and several researchers had

successfully studied the delineated characteristics between bound and free water fraction utilizing several thermal techniques (Hatakeyama et al., 1988, Nakamura et al., 1981). Owing to the restricted 'freedom of movement', bound water exhibits delineated thermodynamic solvent properties compared to free/bulk water fraction and such an anomaly in solvent (water) properties was reported to affect various phenomena like drug dissolution, drug diffusion, drug chemical stability and microbial growth. However, overall thermodynamic energy status of bound and free water can be collectively expressed as water activity (a_w) (Caurie, 2011).

Manufacturing process investigation and material characterization was undertaken in this section to understand the influence of process parameters on water activity modulation of certain water-in-oil type cream formulation. Table 4, represents the composition of model water-in-oil type cream formulation and its process parameters. It can be inferred from table 5 that modification of process parameters had significant effects in modulating the water activity of the model cream formulation. The cream formulation exhibited a resultant water activity a_w -0.93 when initially processed at relatively lower homogenization speed and time. However, upon doubling the homogenization speed and time, the resultant water activity was significantly lowered to a_w -0.87. Further, thermogravimetric investigation (figure 13) had revealed that resultant water content of model creams processed at two difference conditions was almost similar (15 – 16 % w/w).

Formulation Code	Homogenization Speed (RPM)	Homogenization Time (minutes)	Water Activity (a_w) 22°C
1.	3500	15	0.932 ± 0.02
2.	7000	30	0.871 ± 0.03

Table 6: Effect of process parameters on water activity of w/o type cream formulation processed at various conditions

Processing investigation on model cream was performed in a completely sealed glass chamber with limited head space. This precaution was necessarily taken to prevent the loss of water to ambience during emulsification process. The resultant difference in cream water activity between creams processed at two set of conditions can be strictly attributed to difference in thermodynamic energy status of water (owing to changes in bound and free water fraction) rather than absolute amount of water present in it. It can be inferred here that changes in manufacturing process conditions could potentially influence the water activity of semi-solid cream formulations and by carefully controlling the process parameters it is feasible to achieve a topical cream product with desired water activity.

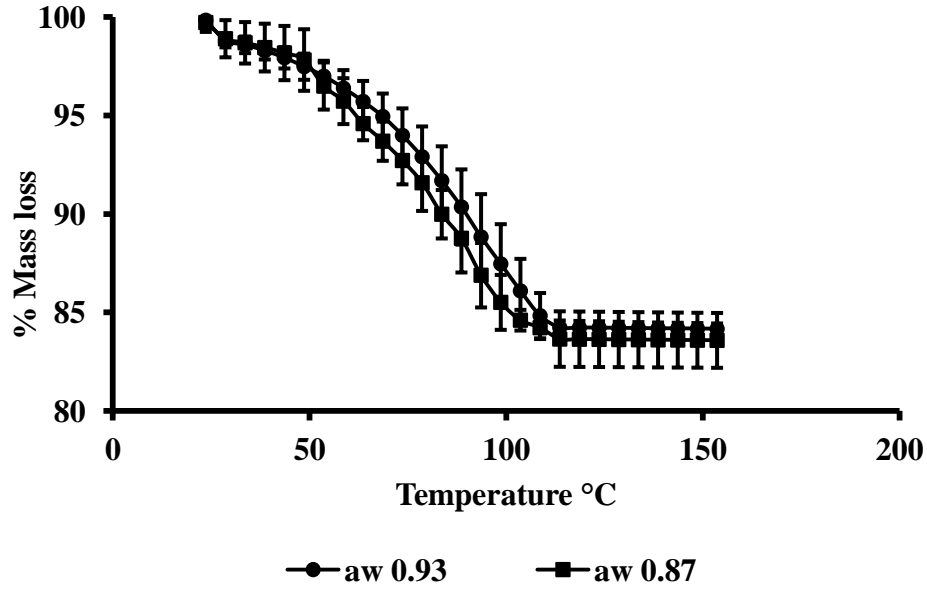


Figure 13: Determination of total water content in model w/o type cream formulation using thermogravimetry

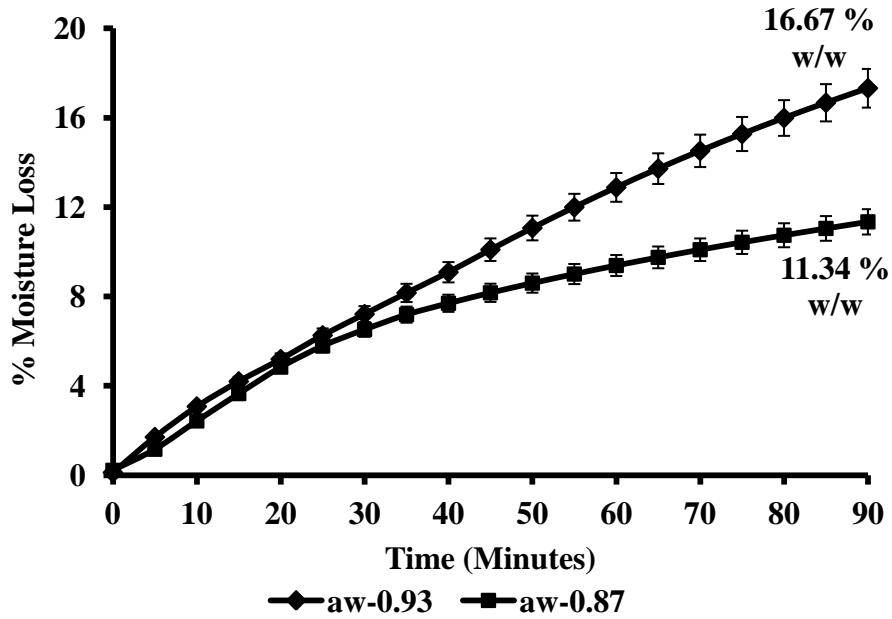


Figure 14: Determination of drying rate of model w/o type cream formulation using thermogravimetry

Figure 14 represents the drying rate curve of two cream lots possessing significantly different water activity as a result of varied process conditions. Evidently, cream lot (formulation II) processed at 7000 rpm/30 minutes led to formation of relatively smaller globules (dispersed aqueous phase) compared to the cream lot (formulation I) processed at 3500 rpm/15 minutes (figure 13).

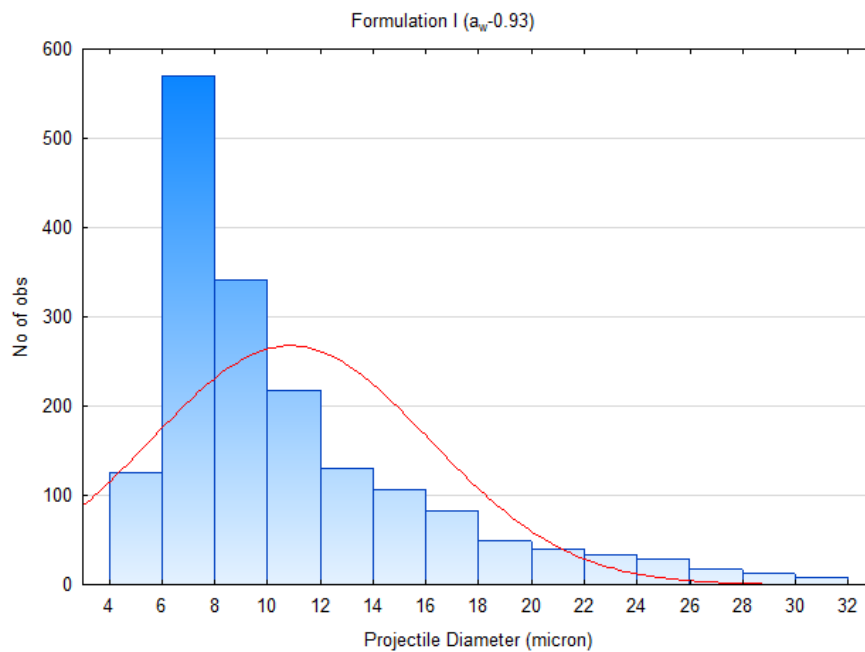


Figure 15a: Globule size distribution of dispersed phase (aqueous phase) in test cream I ($a_w=0.93$)

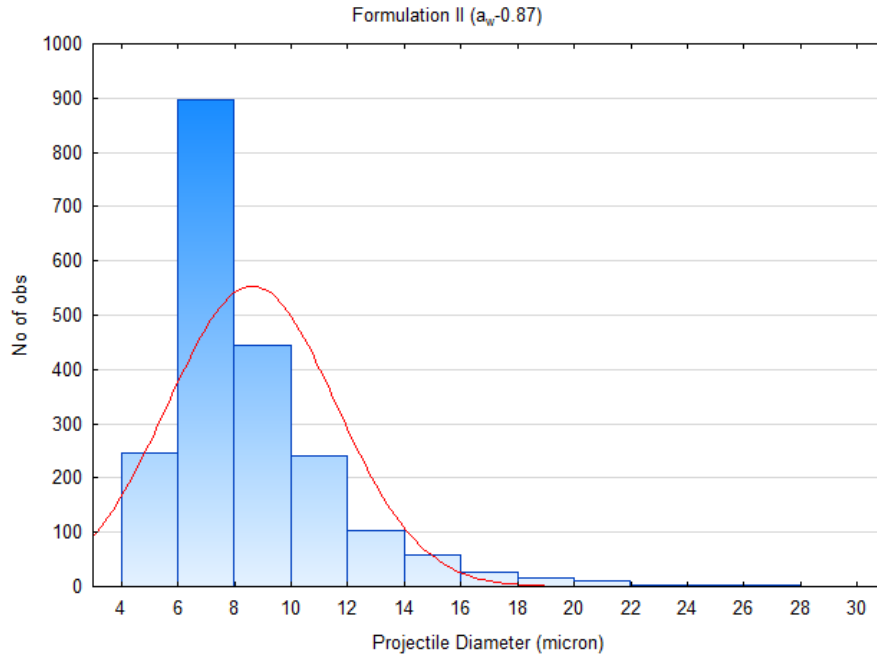


Figure 15b: Globule size distribution of dispersed phase (aqueous phase) in test cream I ($a_w-0.87$)

Higher percent of relatively smaller globules in formulation II had plausibly facilitated a stronger interfacial interaction leading to an intricate 3D interlamellar gel network containing relatively strongly bound water globules. In retrospect, formulation II (processed at 7000 rpm/30 minutes) was presumed to exhibit relatively higher degree of water binding in interlamellar gel network when compared to formulation I (processed at 3500 rpm/15 minutes) and hence these differences were found to complement the low water activity of formulation II ($a_w-0.87$) and eventually slower drying rate when compared to formulation I ($a_w-0.93$).

Apparently, under in-use conditions (clinical use), dermatological creams with high water activity and higher degree of drying (rate of water loss) could potentially lead to faster precipitation of dissolved drug content and thus affect skin permeation of drugs. On contrary, dermatological creams with low water activity could strongly retain its water content (otherwise

slower rate of water loss) and dissolved drug fraction leading to prolonged skin permeation of drugs.

5. Conclusion

Variation in manufacturing process conditions influenced water activity of model semi-solid cream formulations. Net changes in water activity potentially influenced drying rate of the cream formulations thereby altering dynamics of topical drug delivery by affecting variables governing vehicle-drug and vehicle-skin interactions.

BIBLIOGRAPHY

1. Buhse L, Kolinski R, Westenberger B, Wokovich A, Spencer J, Chen CW, Turujman S, Gautam-Basak M, Kang GJ, Kibbe A 2005. Topical drug classification. *International journal of pharmaceutics* 295(1):101-112.
2. Osborne DW 2008. Review of changes in topical drug product classification. *Pharmaceutical Technology* 32(10):66-74.
3. Griffiths W, Wilkinson J. 1998. *Topical Therapy. Textbook of Dermatology*'de. Champion RH, Burton JL, Burns DA, Breathnach SM: 6. Baskı. ed.: Blackwell, London.
4. Katz M 1973. Design of topical drug products: pharmaceutics. *Drug design* 4:93-148.
5. Polano MK, August P. 1984. *Topical skin therapeutics*. ed.: Churchill Livingstone.
6. Chang D, Chang R-K 2007. Review of current issues in pharmaceutical excipients.
7. Lionberger RA, Lee SL, Lee L, Raw A, Lawrence XY 2008. Quality by design: concepts for ANDAs. *The AAPS journal* 10(2):268-276.
8. Food U, Administration D 2004. PAT guidance for industry—a framework for innovative pharmaceutical development, manufacturing and quality assurance. US Department of Health and Human Services. Food and Drug Administration, Center for Drug Evaluation and Research, Center for Veterinary Medicine, Office of Regulatory Affairs, Rockville, MD.
9. Chang R-K, Raw A, Lionberger R, Yu L 2013. Generic development of topical dermatologic products: formulation development, process development, and testing of topical dermatologic products. *The AAPS journal* 15(1):41-52.
10. Singh J 2015. International conference on harmonization of technical requirements for registration of pharmaceuticals for human use. *Journal of pharmacology & pharmacotherapeutics* 6(3):185.

11. Krishnaiah YS, Xu X, Rahman Z, Yang Y, Katragadda U, Lionberger R, Peters JR, Uhl K, Khan MA 2014. Development of performance matrix for generic product equivalence of acyclovir topical creams. *International journal of pharmaceutics* 475(1):110-122.
12. Murthy SN, Sen A, Zhao Y-L, Hui SW 2003. pH influences the postpulse permeability state of skin after electroporation. *Journal of controlled release* 93(1):49-57.
13. Levin J, Maibach H 2008. Human skin buffering capacity: an overview. *Skin Research and Technology* 14(2):121-126.
14. Walters KA. 2002. *Dermatological and transdermal formulations*. ed.: CRC Press.
15. Hadgraft J 2004. Skin deep. *European journal of pharmaceutics and biopharmaceutics* 58(2):291-299.
16. Blandamer MJ, Engberts JB, Gleeson PT, Reis JCR 2005. Activity of water in aqueous systems; a frequently neglected property. *Chemical Society Reviews* 34(5):440-458.
17. Houk J, and Richard H. Guy 1988. Membrane models for skin penetration studies. *Chemical Reviews* 88(3):455-472.
18. Al-Khamis KI, Davis SS, Hadgraft J 1986. Microviscosity and drug release from topical gel formulations. *Pharm Res* 3(4):214-217.
19. KRISTL A, VESNAVER G, MRHAR A, KOZJEK F 1993. Evaluation of partitioning and solubility data for some guanine derivatives in terms of mutual miscibility of octanol and water phase. *Pharmazie* 48(8):608-610.
20. Yalkowsky SH, He Y, Jain P. 2010. *Handbook of aqueous solubility data*. ed.: CRC press.
21. Budavari S, Windholz M. 1989. *The merck index*. ed.: Merck Rahway, NJ.

22. Simon GA, Maibach HI 2000. The pig as an experimental animal model of percutaneous permeation in man: qualitative and quantitative observations—an overview. *Skin Pharmacology and Physiology* 13(5):229-234.
23. Franz T 1977. The finite dose technique as a valid in vitro model for the study of percutaneous absorption in man. *Current problems in dermatology* 7:58-68.
24. Franz TJ 1975. Percutaneous absorption. On the relevance of in vitro data. *Journal of Investigative Dermatology* 64(3):190-195.
25. Seta Y, Ghanem A, Higuchi W, Borsadia S, Behl C, Malick A 1992. Physical model approach to understanding finite dose transport and uptake of hydrocortisone in hairless guinea-pig skin. *International journal of pharmaceutics* 81(1):89-99.
26. Kubota K, Yamada T 1990. Finite dose percutaneous drug absorption: theory and its application to in vitro timolol permeation. *Journal of pharmaceutical sciences* 79(11):1015-1019.
27. Pirot F, Morel B, n e, dicte e, Peyrot G, raldine e, Vuillet T, Faivre V, Bodeau C, Falson F, oise c 2003. Effects of osmosis on water-holding capacity of stratum corneum and skin hydration. *Exogenous Dermatology* 2(5):252-257.
28. Nowacka A, Douezan S, Wadsö L, Topgaard D, Sparr E 2012. Small polar molecules like glycerol and urea can preserve the fluidity of lipid bilayers under dry conditions. *Soft Matter* 8(5):1482-1491.
29. Gekas V, Gonzalez C, Sereno A, Chiralt A, Fito P 1998. Mass transfer properties of osmotic solutions. I. Water activity and osmotic pressure. *International Journal of Food Properties* 1(2):95-112.

30. Rastogi N, Raghavarao K 1994. Effect of temperature and concentration on osmotic dehydration of coconut. *LWT-Food Science and Technology* 27(6):564-567.
31. Toledo RT. 2007. *Fundamentals of food process engineering*. ed.: Springer Science & Business Media.
32. Sereno A, Hubinger M, Comesana J, Correa A 2001. Prediction of water activity of osmotic solutions. *Journal of Food Engineering* 49(2):103-114.
33. Williams AC, Barry BW 2012. Penetration enhancers. *Advanced drug delivery reviews* 64:128-137.
34. Alonso A, Meirelles NC, Tabak M 1995. Effect of hydration upon the fluidity of intercellular membranes of stratum corneum: an EPR study. *Biochimica et Biophysica Acta (BBA)-Biomembranes* 1237(1):6-15.
35. Alonso A, Meirelles NC, Yushmanov VE, Tabak M 1996. Water increases the fluidity of intercellular membranes of stratum corneum: correlation with water permeability, elastic, and electrical resistance properties. *Journal of Investigative Dermatology* 106(5):1058-1063.
36. Idson B 1978. Hydration and percutaneous absorption.
37. Roberts EM, Walker M 1993. Water. The most natural penetration enhancer *Drug and Pharm Sci* 59:1-30.
38. Al-Khamis KI, Davis SS, Hadgraft J 1986. Microviscosity and drug release from topical gel formulations. *Pharmaceutical research* 3(4):214-217.
39. Gašperlin M, Kristl J, Šmid-Korbar J, Kerč J 1994. The structure elucidation of semisolid w/o emulsion systems. *International journal of pharmaceutics* 107(1):51-56.

40. De Vringer T, Joosten J, Junginger H 1987. A study of the gel structure in a nonionic O/W cream by X-ray diffraction and microscopic methods. *Colloid and Polymer Science* 265(2):167-179.
41. Junginger H 1984. The ratio of interlamellarly fixed water to bulk water used as quality criterion in O/W creams. *Berichte der Bunsengesellschaft für physikalische Chemie* 88(11):1070-1074.
42. Hatakeyama T, Nakamura K, Hatakeyama H 1988. Determination of bound water content in polymers by DTA, DSC and TG. *Thermochimica Acta* 123:153-161.
43. Nakamura K, Hatakeyama T, Hatakeyama H 1981. Studies on bound water of cellulose by differential scanning calorimetry. *Textile research journal* 51(9):607-613.
44. Caurie M 2011. Bound water: its definition, estimation and characteristics. *International Journal of Food Science & Technology* 46(5):930-934.

VITA

MURALI KRISHNAN ANGAMUTHU

116 Taylor Meadows Dr., Oxford, MS 38655 • (917) 226-9578 • krisamurali@gmail.com

Education

Ph.D. (Pharmaceutics & Drug Delivery) January 2012 – December 2016
University of Mississippi GPA: 3.53/4.00

Post-graduate certificate (Hands-on training in tablet technology) September 2012
University of Tennessee

M.S. (Pharmaceutics & Industrial Pharmacy) August 2008 - December 2011
Long Island University, New York GPA: 3.45/4.00

B. Pharmacy September 2006 - June 2010
Tamil Nadu Dr. MGR Medical University GPA: 4.00/4.00

Work Experience

Amgen Inc., San Francisco, CA June 2013 – August 2013
Product Development Intern – Solid Oral Dose Development

- Developed directly compressible extended-release tablet for an investigational drug utilizing swellable-core matrix technology.
- Performed raw material screening, preformulation, excipient compatibility and dosage form design.
- Developed multiple dose strength prototypes with optimized drug release profiles.
- Assisted development team in scale-up efforts, pilot lab tech transfer and optimization of clinical trial batch.
- Presented the research findings at company ‘Tech-ops’ meeting.
- Demonstrated strong analytical thinking and creative problem solving.

Novartis Consumer Healthcare, Parsippany, NJ February 2007 – August 2008
Offshore Drug Safety Associate (CTS, India)

- Collected and documented product quality complaints and responded to medical inquiries for **Novartis** OTC line of products.
- Collected adverse event complaints from patients and healthcare professionals.
- Classified adverse events and reported to client drug safety team with associated documentation and narrative writing.
- Administered behavior support program and offered smoking cessation counseling.

- Acquired working experience in manufacturing equipment including PMA, powder blenders, homogenizer, mechanical mills, fluid bed coater/dryer, and pan-coaters.
- Observed the journey of a formulation from just a chemical to an actual dosage form in cGMP facility.

Achievements and Awards

- US Food and Drug Administration Doctoral Fellowship
- National Institutes of Health Fellowship Award
 - Awarded with \$10,000 grant funding for developing competitive research proposal.
 - Developed study objectives, experimental plans, contingency plans and timeline.
 - Drafted a strong technical write up for submission to NIH.
- BASF Travelship Award – Received for best research presentation at 2013 AAPS meeting.
- Academic Excellence Award – Rho Chi Honorary Society
- Newsletter Editor & Steering Committee Member – Dermatopharmaceutics Focus Group, AAPS

Technical Skills

- **Solid-state characterization: TGA, DSC, DVS, PXRD, FT-IR**
- **Microscopy: Optical, SEM, AFM**
- **Particle size analyses: Horiba laser diffraction analyzer, Malvern Zetasizer**
- **Texture analyzer (TA XT Plus), Density (Accupyc II gas pycnometer)**
- **Performance testing: In vitro release study, In vitro permeation study**

Publications

Book Chapter

Book title: Percutaneous penetration enhancers - Editor: Howard I. Maibach. (in press)

Chapter title: Therapeutic applications of transdermal electroporation.

Muralikrishnan Angamuthu, S. Narasimha Murthy

Research Publications

- **Muralikrishnan Angamuthu, Shivakumar H. Nanjappa, Vijayasankar Raman, Seongbong Jo, Phaniraj Cegu, and S. Narasimha Murthy.** "Controlled-release injectable containing Terbinafine/PLGA microspheres for Onychomycosis Treatment." Journal of pharmaceutical sciences 103, no. 4 (2014): 1178-1183.

- Prashanth Manda, **Muralikrishnan Angamuthu**, Shobharani R. Hiremath, Vijayasankar Raman, and S. Narasimha Murthy. "Iontophoretic drug delivery for the treatment of scars." *Journal of pharmaceutical sciences* 103, no. 6 (2014): 1638-1642
- Swetha Ainampudi, **Muralikrishnan Angamuthu**, Robert Sedlock, and John Sturgis. "Advantages of an instrumented tablet press in the early formulation screening and development of directly compressible modified-release tablets." *Tablets & Capsules* August (2015)
- Bhagurkar, Ajinkya M., Muralikrishnan Angamuthu, Hemlata Patil, Roshan V. Tiwari, Abhijeet Maurya, Seyed Meysam Hashemnejad, Santanu Kundu, S. Narasimha Murthy, and Michael A. Repka. "Development of an ointment formulation using hot-melt extrusion technology." *AAPS PharmSciTech* 17, no. 1 (2016): 158-166.